

**TELECOM REGULATORY AUTHORITY OF INDIA  
(Quality of Service Division)**

**Dated : 17<sup>th</sup> August, 2015**

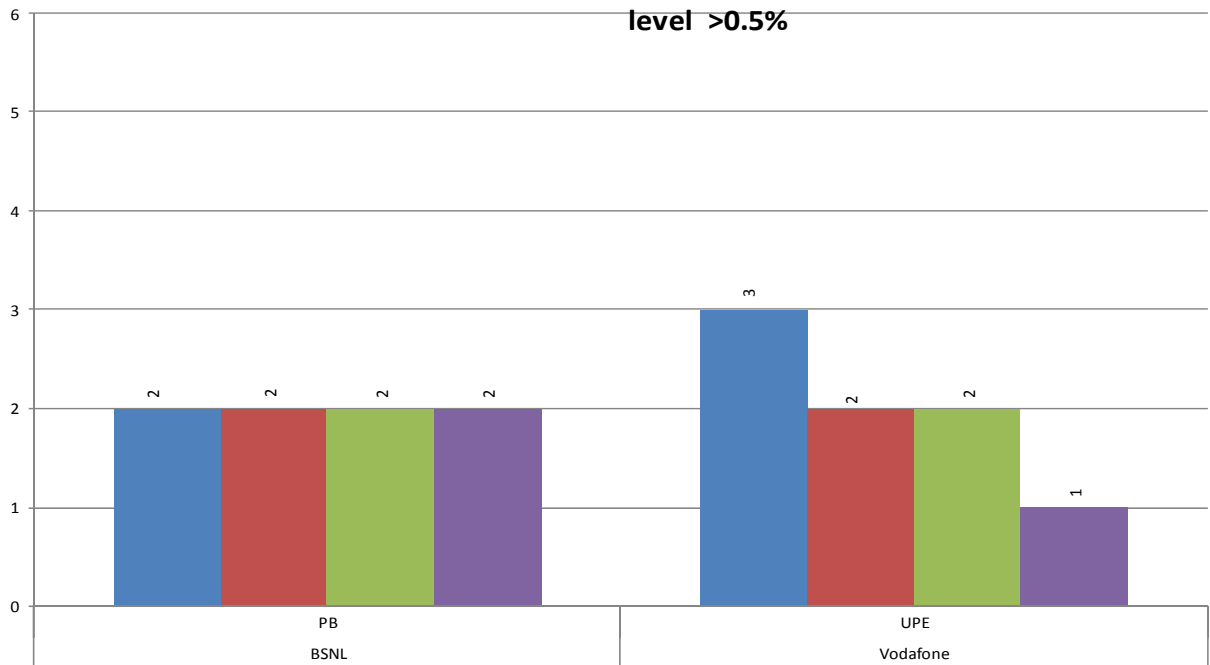
**Point of Interconnection (POIs) Congestion report of the Cellular Mobile Telephone Service Providers (CMTS) and Basic Telephone Service (Wireline) Providers for the months of January, February & March, 2015.**

TRAI has been monitoring the level of congestion at the Point of Interconnection (POI) between various service providers on monthly basis. This parameter signifies the ease with which a customer of one network is able to communicate with a customer of another network. This parameter also reflects as to how effective is the interconnection between two networks. The benchmark notified by TRAI in the QoS Regulations for this parameter is <0.5%. This means out of 200 calls between two operators only one call should face congestion. The result of the monitoring reveals that degree of congestion between the operators is generally within limit in most of the areas.

**A. Cellular Mobile Telephone Service :**

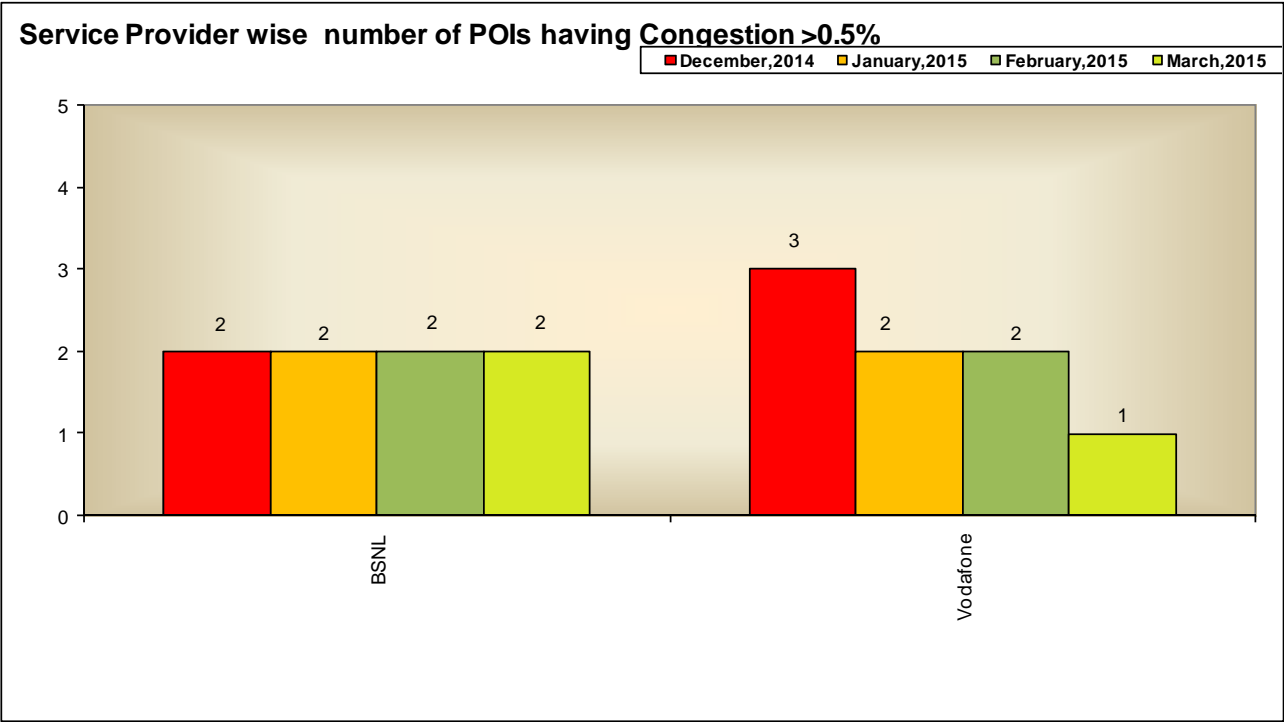
- Cellular Mobile Service Providers (CMSPs) have submitted their POIs Congestion Reports to TRAI for the months of January, February & March, 2015.
- This report includes only the Service Providers who do not meet TRAI's stipulated POI Congestion benchmark of <0.5% in any of their service area.
- The number of POIs having congestion has decreased from 5 POIs in December 2014 to 3 POIs in March, 2015.
- M/s Vodafone has congestion in 2 POIs in January, 2015, 2 POIs in February and 1 POI in March, 2015.
- M/s BSNL has congestion in 2 POI in January 2015, 2 POIs in February and 2 POIs in March, 2015
- The affected circles/states due to POI congestion are Punjab and UP (E).

**Service Provider wise & service Area wise number of POIs having Congestion level >0.5%**

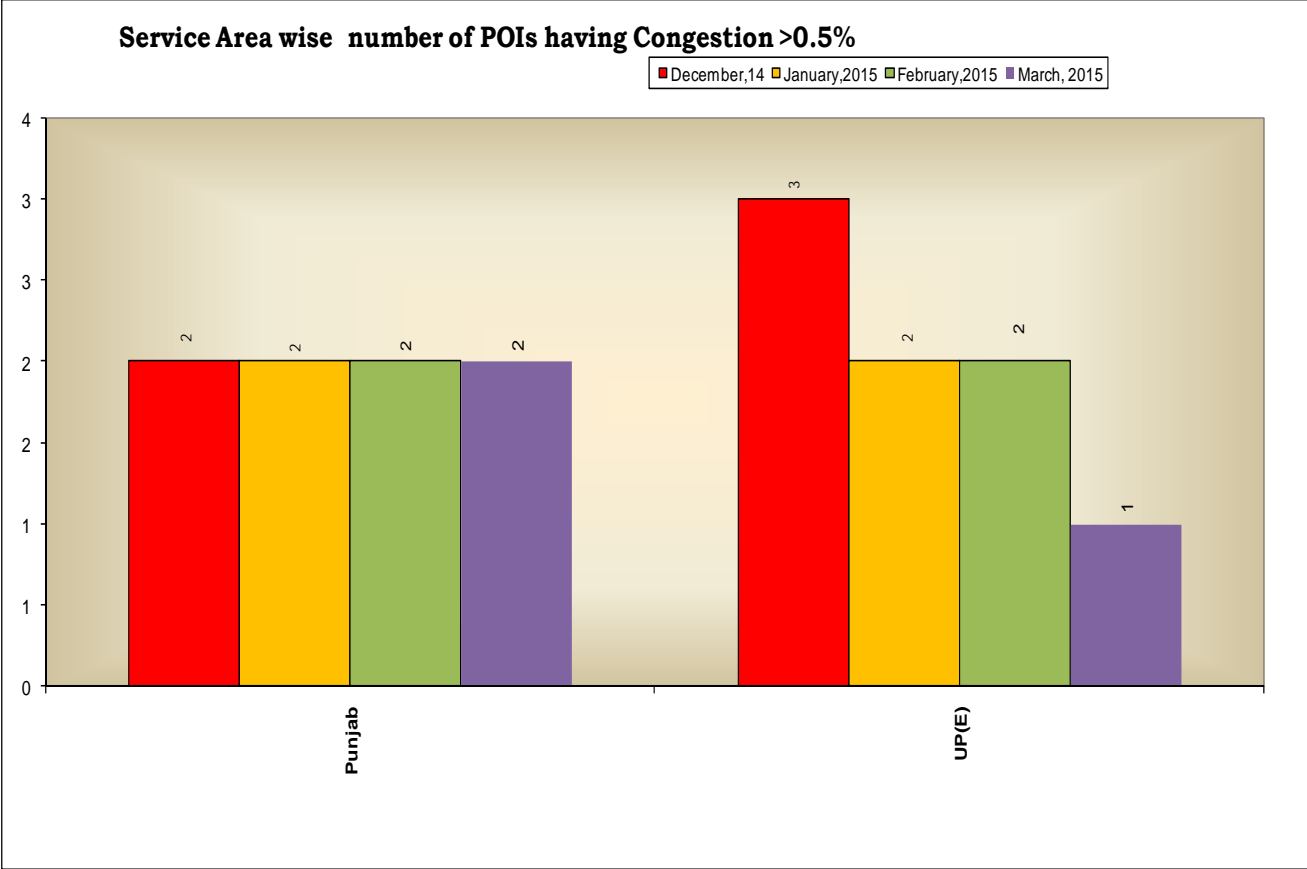


	PB BSNL	UPE Vodafone
December, 2014	2	3
January, 2015	2	2
February, 2015	2	2
March, 2015	2	1

**(ii) Service Provider wise POI Congestion (CMTS)**



**(iii) Service Area wise POI Congestion (CMTS)**

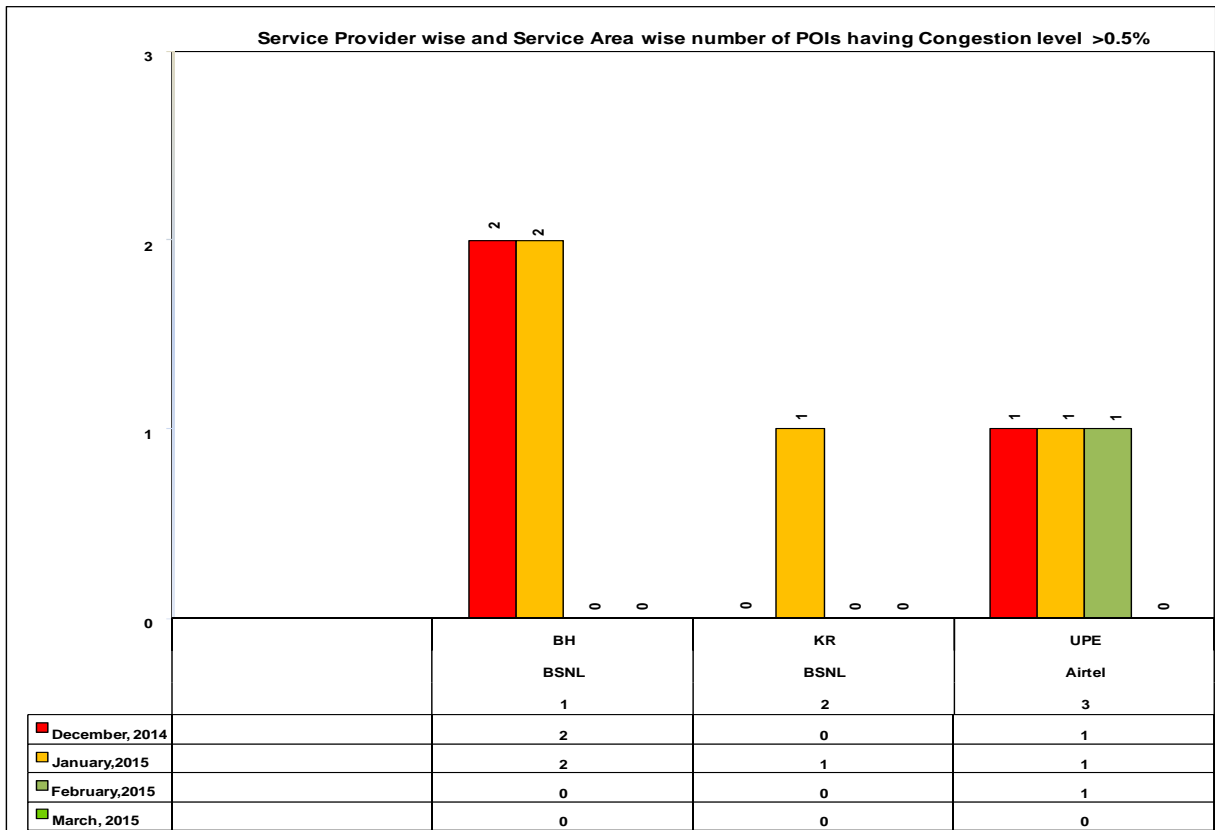


### **Basic Telephone Service (Wireline) :**

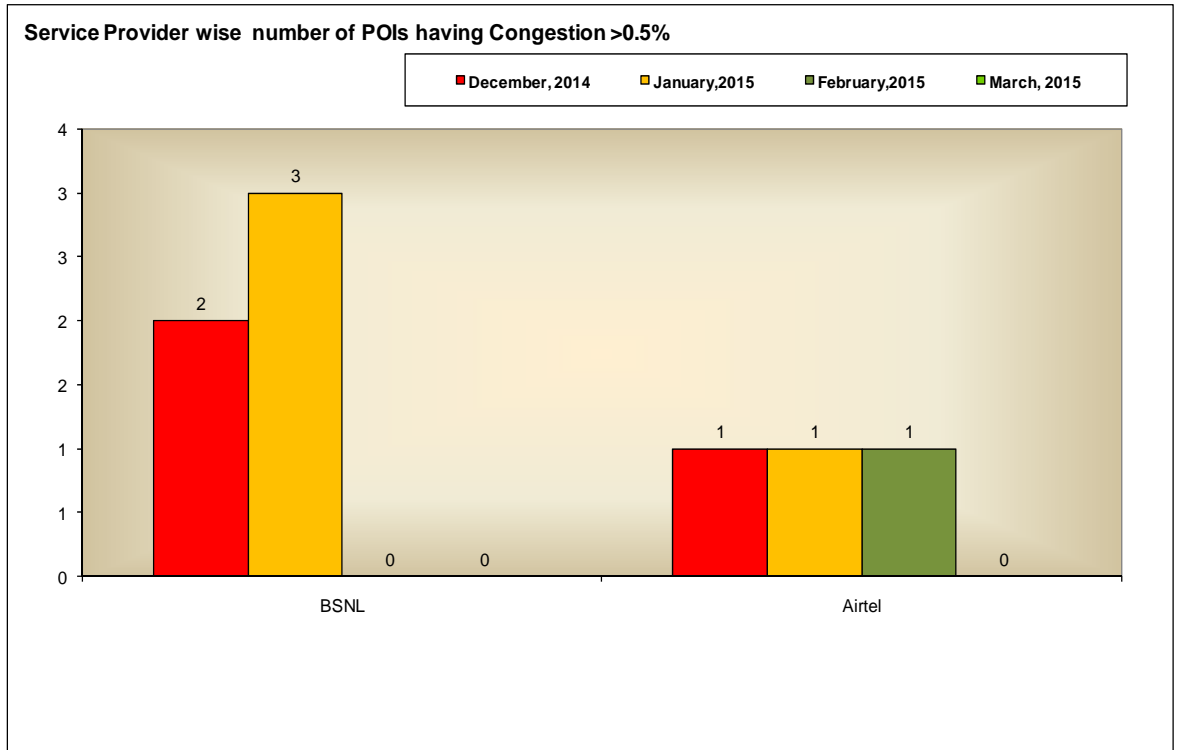
As per the Regulations, 2009, Basic Telephone Service (Wireline) Providers have submitted their POIs Congestion Reports to TRAI for the months of January, February & March, 2015.

- This report includes only the Service Providers who do not meet the TRAI's stipulated POI Congestion benchmark of <0.5% in any of their service area.
- The POI Congestion Report shows that the performance of the Basic Telephone Service (Wireline) providers with respect to the congestion on POIs in the month of March, 2015 has decreased from 3 in December to Nil in March 2015.
- M/s BSNL has congestion in 3 POI in January, nil POIs in February and nil POI in March, 2015.
- M/s Airtel has congestion in 1 POI in January, 1 POI in February, 2015 and nil POI in March, 2015.
- The affected Circles/ States due to POI congestion are Bihar, Kerala and UP (E).

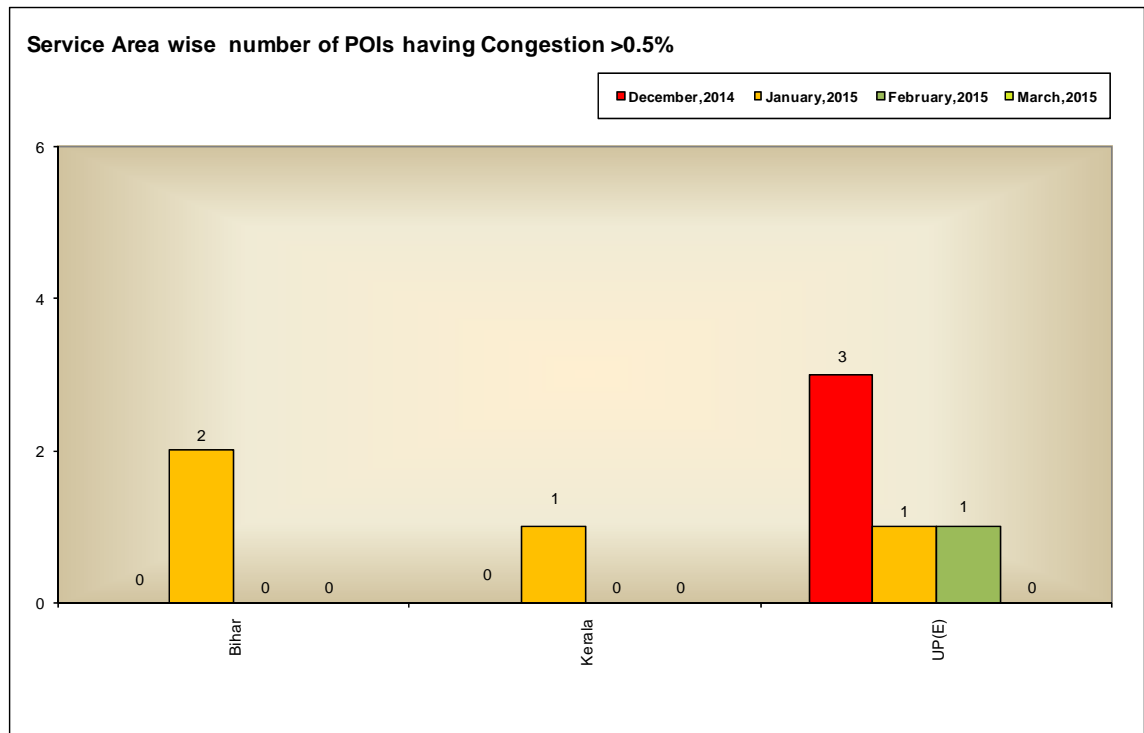
**(iv) Service Provider wise POI Congestion (Basic Telephone Service (Wireline))**



**(v) Service Provider wise POI Congestion (Basic Telephone Service (Wireline))**



**(vi) Service Provider wise POI Congestion (Basic Telephone Service wireline)**





The non-provisioning and insufficient provisioning of telecom circuit resource as per traffic requirements leads to:

- inter-network congestion at the Point of Interconnection (POI)
  - loss of calls
  - repeated call attempts by consumers
  - deterioration in Quality of Service (QoS)
  - consumer dissatisfaction
- 

Contact Address in case any clarification required:

Advisor (QoS), TRAI  
Mahanagar Doorsanchar Bhawan,  
Jawahar Lal Nehru Marg (Old Minto Road),  
New Delhi - 110002.  
Telephone – 011 - 23230404

Authorised for issue

Advisor (QoS)

Analysis - Service Provider wise (CMTS) No. of POI having congestion level 0.5% and >25%								
Operators	December, 2014		January,2015		February,2015		March, 2014	
	>0.5%	>25%	>0.5%	>25%	>0.5%	>25%	>0.5%	>25%
BSNL	2	0	2	1	2	0	2	0
Vodafone	3	0	2	0	2	0	1	0
Total	5	0	4	1	4	0	3	0

Analysis - Service Area wise (CMTS) No. of POIs having congestion level > 0.5% and >25%									
SL. No.	Circles	December,2014		January,2015		February,2015		March, 2015	
		>0.5%	>25%	>0.5%	>25%	>0.5%	>25%	>0.5%	>25%
1	Punjab	2	0	2	1	2	0	2	0
2	UP(E)	3	0	2	0	2	0	1	0
Total		5	0	4	1	4	0	3	0

Service Provider wise POI Congestion of Basic Telephone Service (Wireline)					
SL. No.	Name of Service provider	December, 2014	January,2015	February,2015	March, 2015
1	BSNL	2	3	0	0
2	Airtel	1	1	1	0
Total		3	4	1	0

Service Area wise (Basic Telephone-Wireline) No. of POIs having congestion level 0.50% &>25%									
SL. No.	Circles	December, 2014		January,2015		February, 2015		March, 2015	
1	Bihar	0	0	2	0	0	0	0	0
2	Kerala	0	0	1	0	0	0	0	0
3	UP(E)	3	0	1	1	1	1	0	0
Total		3	0	4	1	1	1	0	0

**Annexure-A****POI Congestion Report (Cellular) of M/s BSNL for the month of January, February & March 2015**

Name of Circle and POIs	Benchmark <0.5%		
	<b>January, 2015</b>	<b>February, 2015</b>	<b>March, 2015</b>
Punjab			
<i>POI with Private Operators</i>			
JALGMSS1 HFCLGSO	14.90%	16.90%	9.40%
1151 (HF_GSM_9645)	30.10%	15.00%	19.30%

**POI Congestion Report (Cellular) of M/s Vodafone for the month of January, February & March 2015**

Name of Circle and POIs	Benchmark <0.5%		
	<b>January, 2015</b>	<b>February, 2015</b>	<b>March, 2015</b>
UP (East)			
<i>POI with Private Operators</i>			
Airtel ICR	0.95%	3.82%	0.00%
Reliance JIO	10.08%	4.51%	0.00%
BSNL L1	0.00%	0.00%	1.38%

**POI Congestion Report (Basic Telephone Service ) of M/s BSNL  
for the month of January, February & March, 2015**

Name of Circle and POIs	Benchmark <0.5%		
	January,2015	February, 2015	March, 2014
Bihar			
<i>POI with Pri vate Operators</i>			
Unitech EA (uninor-M/s Telewings)	6.00%	0.00%	0.00%
Unitech EA (uninor-M/s Telewings)	1.00%	0.00%	0.00%
Kerala			
<i>POI with Pri vate Operators</i>			
M/s Bharti Airtel	5.00%	0.00%	0.00%

**POI Congestion Report (Basic Telephone Service ) of M/s Bharti  
Airtel for the month of January, February & March,2015**

Name of Circle and POIs	Benchmark <0.5%		
	January,2015	February, 2015	March, 2015
UPE			
<i>POI with BSNL Operators</i>			
Cellone (Lucknow)	48.18%	55.78%	0.00%