

# Operator Assisted Drive Test Report

For

## Belagavi

16<sup>th</sup> to 19<sup>th</sup> April 2024

Belagavi – Dharwad – Ramnagar - Belagavi (NH) - 194 Kms  
(16<sup>th</sup> April 2024)

Belagavi & Surrounding Area - 316 Kms  
(17<sup>th</sup> to 19<sup>th</sup> April 2024)

## TRAI RO, Bengaluru

### Key Performance Indicators:

- All TSPs have met the 2% QOS benchmark of Drop Call Rate except BSNL 3G.
- All TSPs have met the 3% QOS benchmark of Call Block Rate except BSNL 3G.
- All 2G/3G/4G TSPs have not met the Rx Quality except Airtel 2G and VIL 2G.
- All 2G/3G/4G TSPs have met the Mobility HOSR except BSNL 3G.
- All 2G/3G/4G TSPs have met the CSSR except BSNL 3G.

The Operator Assisted Drive Test has been carried out by the Regional Office, Bangalore with the help of Service Providers from **16<sup>th</sup> to 19<sup>th</sup> Apr 2024**. The drive test covered the route of **510 Kms** including NH/SH of **194 Kms** & **6** hotspots. Approximately **650** calls were made for each of the 7 networks: three 2G networks, one 3G network, and three 4G networks covering four TSPs.

Overview

Voice  
Summary

Data  
Summary

# Overview

Regional Office, TRAI Bengaluru conducted Operator Assisted Drive Test from **16<sup>th</sup> to 19<sup>th</sup> Apr 2024** covering various locations in **Belagavi & Surrounding Region**. The performance of Airtel, BSNL, Vodafone Idea, and Jio were monitored across various technologies (2G, 3G, and 4G). The test results obtained from these drive tests were utilized to assess the network quality for Voice and Data services in terms of

**Voice:** Coverage, Quality, Hand Over Success Rate, Call Setup Success Rate, Drop Call Rate and Block Call Rate.

**Data:** Download and Upload Throughputs, Web Browsing Delay and Latency

## Drive Test Details:

**Voice Tests:** Calls were made for 90 sec duration with a wait time of 10 sec between calls in all technologies. The drive test covered a drive route of approximately **510 KMs** including **NH/SH of 194 Kms** over a period of 4 days from **16<sup>th</sup> to 19<sup>th</sup> Apr 2024**. Approximately 650 calls were made for each of the 7 networks: three 2G (Lock Mode) networks, one 3G (Dual mode) network, and four 4G networks covering 4 unique TSPs.

**Data Tests:** Dynamic data test (Test Data on Move) was conducted for **510 KMs** including **NH/SH of 194 Kms** over a period of 4 days for download throughput for 3G & 4G technology. Data Tests were performed at 6 static locations; three 2G (Lock mode) networks, one 3G (Dual mode) network, and four 4G (Free mode) networks covering 4 unique TSPs were tested. **All the data through put figure mentioned in the report are based on the average value.**

\* For Voice and Data KPI's, 2G measurement is done with UE locked on 2G, 3G measurement is done with UE in Dual mode (2G & 3G) and 4G measurement is done with UE in Free Mode.

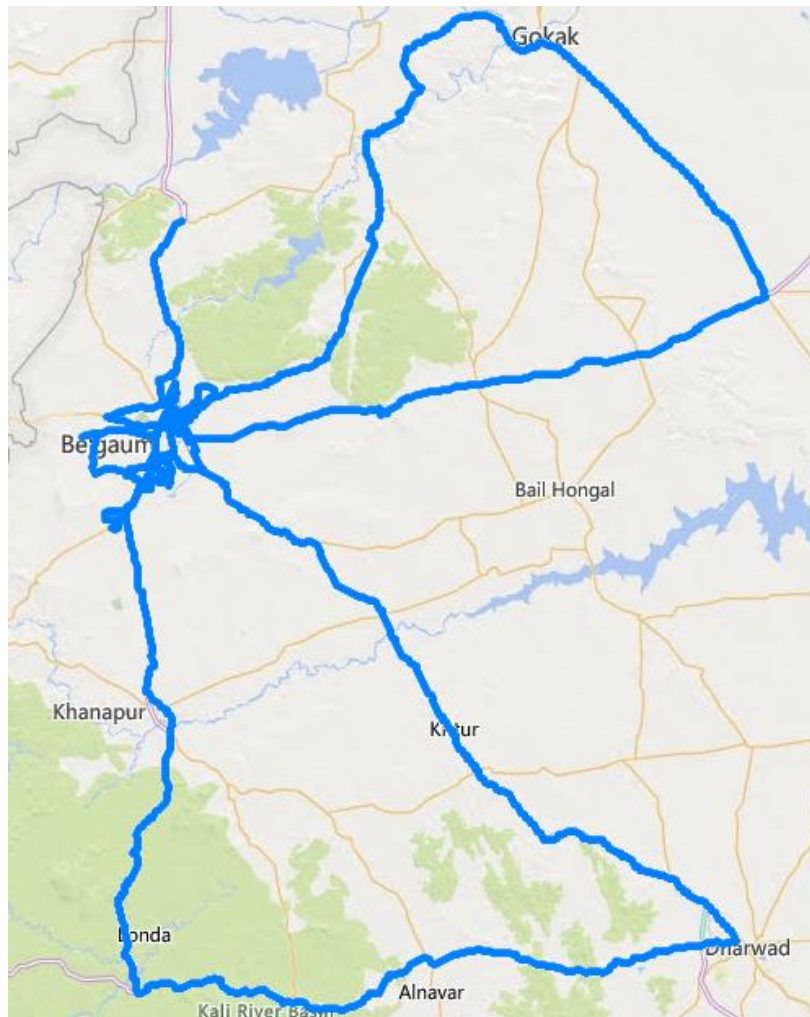
\* 3G KPI's which are calculated from UE in Dual Mode (2G & 3G) includes samples and events of 2G.

\* 4G KPI's which are calculated from the UE in Free Mode included samples and events of 2G & 3G.

Service	Specifications
Download	2G (Locked) - 500KB, 3G (Dual) - 20 MB, 4G (Free) - 40 MB
Upload	2G (Locked) - 100KB, 3G (Dual) - 5 MB, 4G (Free) - 10 MB
Web Browsing	3 links of e/m commerce website <a href="http://www.amazon.in">www.amazon.in</a> , <a href="http://www.flipkart.com">www.flipkart.com</a> and PayTm
Latency	32 Bytes on <a href="http://www.google.com">www.google.com</a>
Video Streaming	130 secs clip

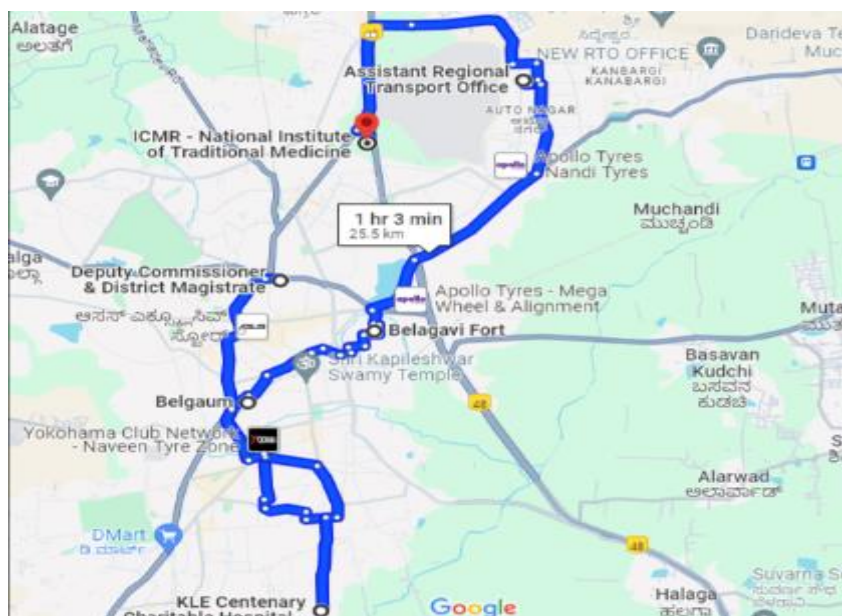
# Overview

## Voice & Dynamic Data Test (Data Test on Move) Drive Route



Areas covered	
Belagavi	Gokak
Dharwad Bypass	Pachapur
Alnavar	Gokak State Highway
Raamnagar	Gokak Falls
Khanapur town	Yergatti
Belagavi city	Nesargi State highway
Dharwad Highway	Sambra Airport road Belagavi
Belagavi	Gokak
Dharwad Bypass	Pachapur
Alnavar	Gokak State Highway

## Data Service Test- Static Locations



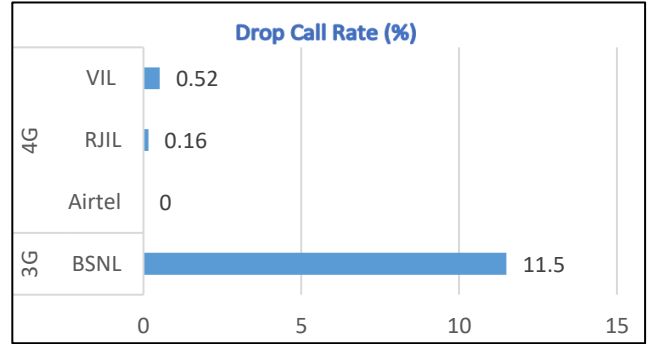
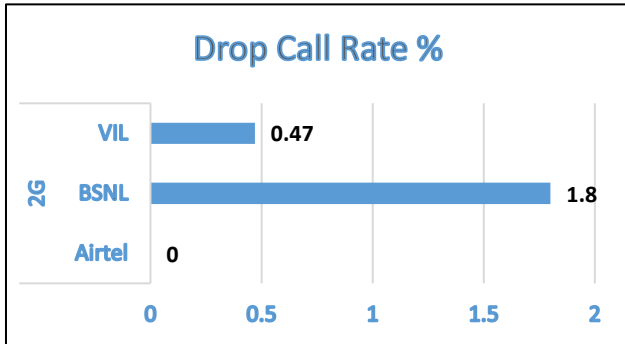
1. KLE Centenary Charitable Hospital
2. Office of District Collector
3. Belagavi Railway Station
4. Belagavi Fort
5. RTO Belagavi
6. ICMR

# Voice Calls

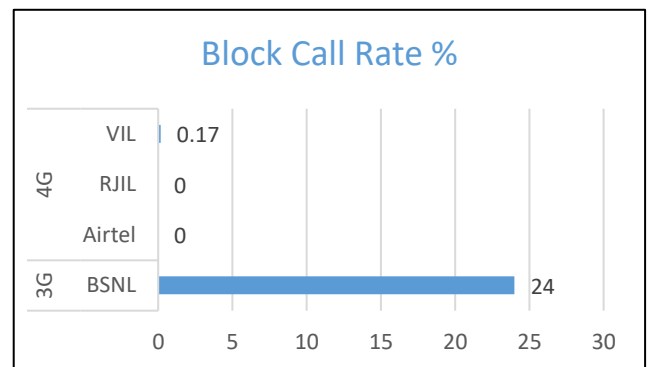
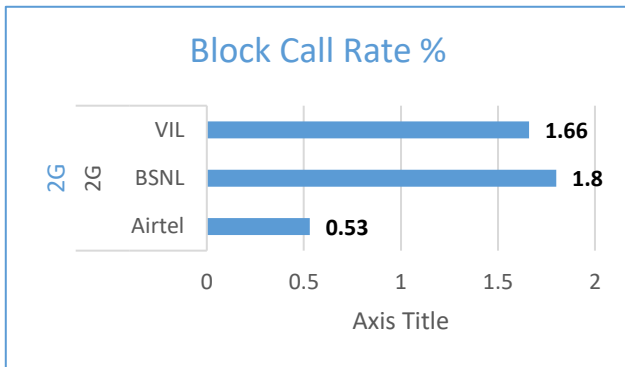
## Key Observations

QoS compliance of the TSPs for Voice across technologies 2G/3G/4G-4G:

Drop Call Rate (%)



Block Call Rate (%)



KPIs	2G			3G	4G		
	Airtel	BSNL	VIL	BSNL	Airtel	RJIL	VIL
Drop Call Rate %	0	1.8	0.47	11.5	0	0.16	0.52
Block Call Rate %	0.53	1.8	1.66	24	0	0	0.17

- a) All TSPs have met the 2% QOS benchmark of Drop Call Rate except BSNL 3G.
- b) All TSPs have met the 3% QOS benchmark of Call Block except BSNL 3G.

# Voice Calls

## Key Observations

### Coverage

a) Percentage of coverage samples for 2G  $\geq$  -85 dBm.

TSPs	2G		
	Airtel	BSNL	VIL
Coverage%	86.73	75.90	85.95

b) Percentage of coverage samples for 3G  $\geq$  -90 dBm & LTE  $\geq$  -110 dBm.

TSPs	3G	4G		
	BSNL	Airtel	JIO	VIL
Coverage %	67.50	98.41	96.17	92.43

c) Percentage of time spent on 3G/4G network

TSPs	3G	4G		
	BSNL	Airtel	JIO	VIL
Time Spent on 3G/4G%	21.6	100	100	99.27

# Summary

## City Level Summary

Voice Call	2G		
	Airtel	BSNL	VIL
Call Attempt	559	703	662
Blocked Call Rate (%)	0.53	1.8	1.66
CSSR% (Accessibility)	99.46	92.31	98.34
Drop Call Rate (%)	0	1.8	0.47
Rx Quality (%)	95.09	92.9	95.4
Mobility HOSR (%)	99.29	96.56	97.38

Voice Call	3G/4G			
	BSNL 3G	Airtel 4G	JIO 4G	VIL 4G
Call Attempt	1124	585	638	582
Blocked Call Rate (%)	24	0	0	0.17
CSSR% (Accessibility)	76	100	99.84	99.83
Drop Call Rate (%)	11.5	0	0.16	0.52
Rx Quality (%)	94.2	92.34	90.87	91.95
Mobility HOSR (%)	86.36	99.03	98.58	98.6

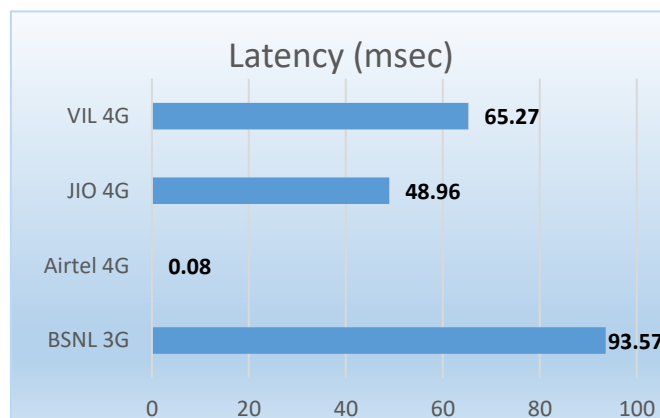
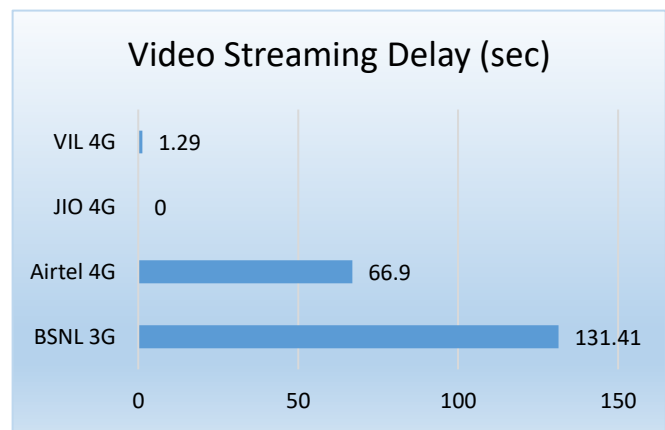
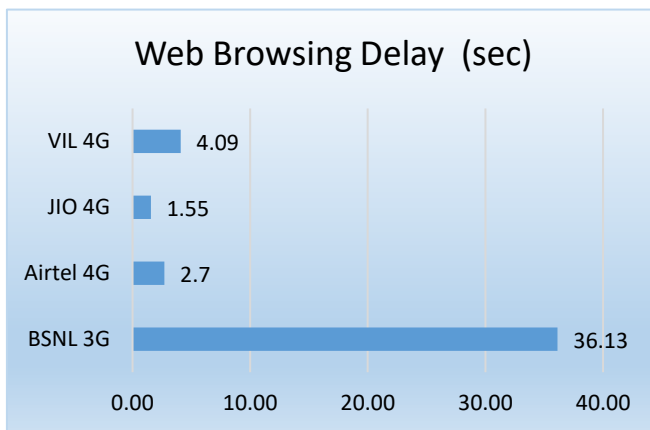
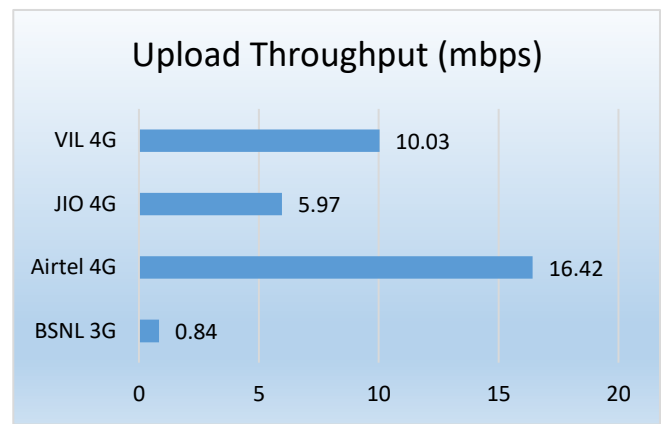
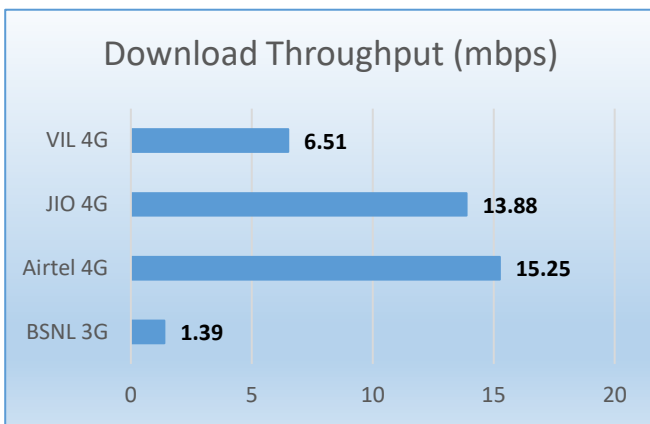
# Data Services Static

## Key Observations

Data was tested at 6 locations. The following services were tested: Data Download/Upload, Latency (www.google.com), and Web browsing (Flipkart, Amazon, Paytm)

### Data Download, Upload Performance (Mbps), Web Browsing delay, Video Streaming and Latency 3G/4G

#### 3G/4G/ Network:



# Summary

## City Level Summary(contd.)

Data Services Static	2G		
	Airtel	BSNL	VIL
Download Throughput (kbps)	112.85	40.4	121.03
Upload Throughput (kbps)	11.33	63.31	24
Web Browsing Delay (sec)	70.29	188.98	51
Latency (msec)	262	200.3	153.77

Data Services Static	3G/4G			
	BSNL 3G	Airtel 4G	JIO 4G	VIL 4G
Download Throughput (mbps)	1.39	15.25	13.88	6.51
Upload Throughput (mbps)	0.84	16.42	5.97	10.03
Web Browsing Delay (sec)	36.13	2.7	1.55	4.09
Video Streaming Delay (sec)	131.41	66.9	0	1.29
Latency (msec)	93.57	0.08	48.96	65.27

Data Services Dynamic (Data Test on Move)	3G	4G		
	BSNL	Airtel	JIO	VIL
Download Throughput (mbps)	2.324	16.2	18.07	8.68
Upload Throughput (mbps)	0.088	9.21	3.41	NA



# Summary

## City Level Data Services Static(contd.)

Data Services Static – KLE Centenary Charitable Hospital	2G		
	Airtel	BSNL	VIL
Download Throughput (kbps)	169.4	31.52	121.5
Upload Throughput (kbps)	12.18	42.95	69
Web Browsing Delay (sec)	44.95	192.85	54.27
Latency (ms)	276.8	231	215

Data Services Static – KLE Centenary Charitable Hospital	3G	4G		
	BSNL	Airtel	JIO	VIL
Download Throughput (Mbps)	1.56	16.92	8.75	7.03
Upload Throughput (Mbps)	0.82	14.61	5.22	9.28
Web Browsing Delay (sec)	100.75	2.53	1.87	3.86
Video Streaming Delay (sec)	128.7	0.08	0	0.59
Latency (ms)	101	58.6	62.5	59.4

Data Services Static – Collector Office	2G		
	Airtel	BSNL	VIL
Download Throughput (kbps)	136.53	58.25	121.5
Upload Throughput (kbps)	16.8	61.6	11.462
Web Browsing Delay (sec)	77.59	246.57	54.268
Latency (msec)	267.8	244	151

Data Services Static - Collector Office	3G	4G		
	BSNL	Airtel	JIO	VIL
Download Throughput (Mbps)	1.39	16.78	12.79	11.09
Upload Throughput (Mbps)	0.77	15.79	5.26	11.082
Web Browsing Delay (sec)	17.64	3.08	1.27	3.674
Video Streaming Delay (sec)	127.68	0.08	0	1.222
Latency (ms)	130	68.8	45	58.2

# Summary

## City Level Data Services Static(contd.)

Data Services Static – Railway Station	2G		
	Airtel	BSNL	VIL
Download Throughput (kbps)	115	36.22	110.43
Upload Throughput (kbps)	8.6	81.31	17.22
Web Browsing Delay (sec)	49.88	164.40	55.592
Latency (ms)	229	178.40	151

Data Services Static – Railway Station	3G	4G		
	BSNL	Airtel	JIO	VIL
Download Throughput (Mbps)	1.29	11.2	14.12	3.99
Upload Throughput (Mbps)	0.83	12.68	13.26	10.16
Web Browsing Delay (sec)	25.89	2.31	1.37	4.09
Video Streaming Delay (sec)	122.57	0.08	0	1.22
Latency (ms)	48.20	69	47	72

Data Services Static – Belagavi Fort	2G		
	Airtel	BSNL	VIL
Download Throughput (kbps)	55.8	36.32	90.92
Upload Throughput (kbps)	17.4	80.8	19.148
Web Browsing Delay (sec)	100.16	158.79	46.326
Latency (msec)	220	168	144

Data Services Static – Belagavi Fort	3G	4G		
	BSNL	Airtel	JIO	VIL
Download Throughput (Mbps)	1.58	20.1	20.76	9.65
Upload Throughput (Mbps)	1.1	21.85	4.44	6.72
Web Browsing Delay (sec)	23.48	2.29	1.52	3.03
Video Streaming Delay (sec)	143.548	0.07	0	1.44
Latency (ms)	67.2	71	45	70

# Summary

## City Level Data Services Static(contd.)

Data Services Static – RTO Office	2G		
	Airtel	BSNL	VIL
Download Throughput (kbps)	122.4	34.17	128.92
Upload Throughput (kbps)	7.6	40.54	14.63
Web Browsing Delay (sec)	64.89	179.50	55.91
Latency (ms)	289	179.20	73

Data Services Static – RTO Office	3G	4G		
	BSNL	Airtel	JIO	VIL
Download Throughput (Mbps)	1.36	15.49	17.2	3.99
Upload Throughput (Mbps)	0.96	17.91	4.38	10.16
Web Browsing Delay (sec)	29.29	2.33	1.85	4.09
Video Streaming Delay (sec)	136.12	0.07	0	1.22
Latency (ms)	120	69	48	60

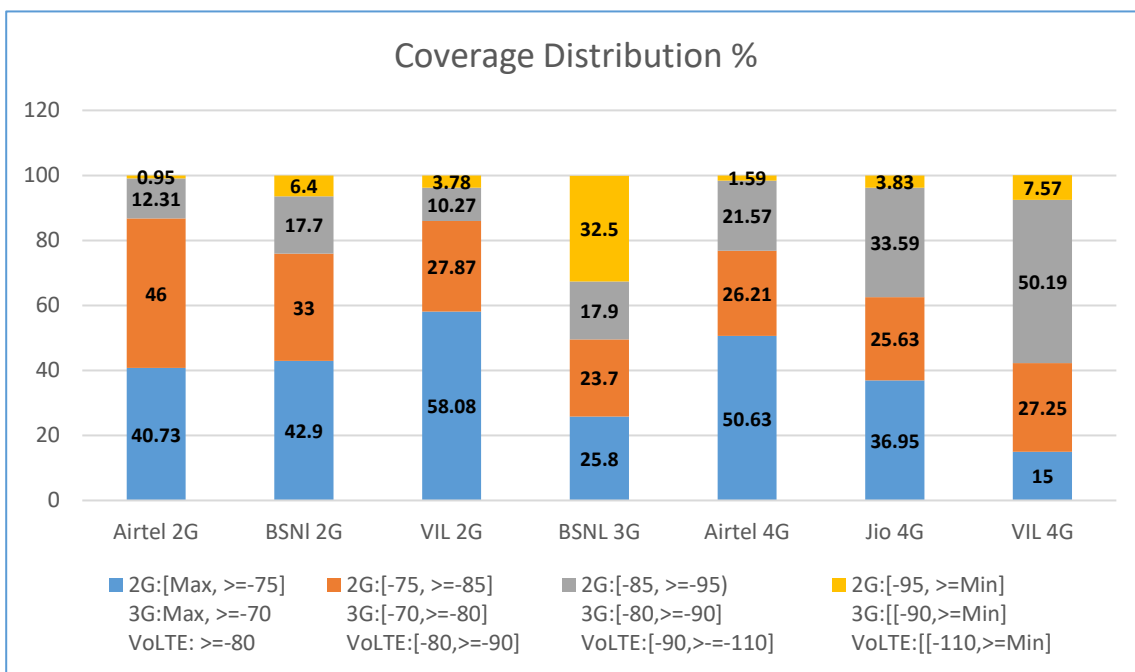
Data Services Static – ICMR	2G		
	Airtel	BSNL	VIL
Download Throughput (kbps)	78	45.90	152.92
Upload Throughput (kbps)	5.4	72.66	12.52
Web Browsing Delay (sec)	84.29	191.74	39.66
Latency (msec)	291.4	201.20	189

Data Services Static – ICMR	3G	4G		
	BSNL	Airtel	JIO	VIL
Download Throughput (Mbps)	1.17	11.01	9.61	3.34
Upload Throughput (Mbps)	0.58	15.7	3.3	12.76
Web Browsing Delay (sec)	19.74	3.67	1.41	5.79
Video Streaming Delay (sec)	129.85	0.09	0	2.04
Latency (ms)	95	65	46	73

# I. Coverage Details

RF Coverage relates to the geographical footprint within the system that has sufficient RF signal strength to provide for a call session. The Coverage rate is calculated on the basis of % of samples in which the Rx level  $\geq -85$  dBm, RSCP is  $\geq -90$  dBm & RSRP  $\geq -110$ dBm. The details are as follows.

TSP	Coverage Rate %
Airtel 2G	86.73
BSNI 2G	75.90
VIL 2G	85.95
BSNL 3G	67.50
Airtel 4G	98.41
Jio 4G	96.17
VIL 4G	92.43

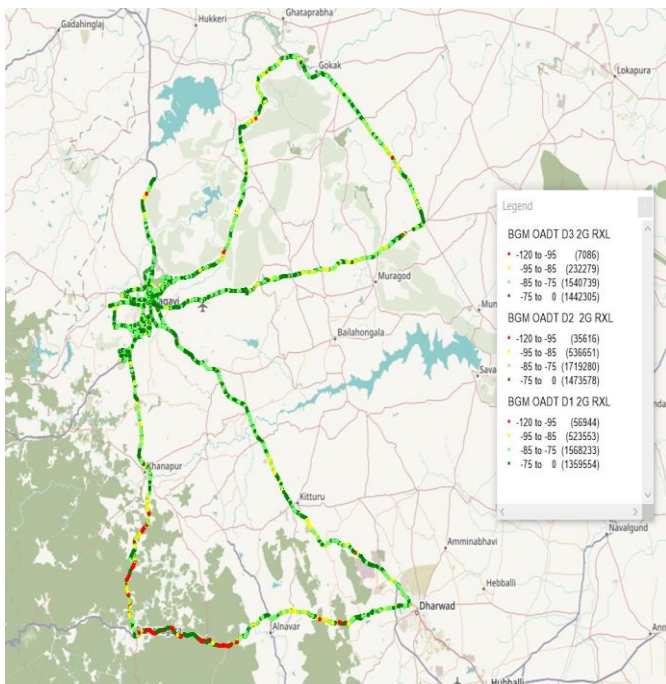


# I. Coverage Details

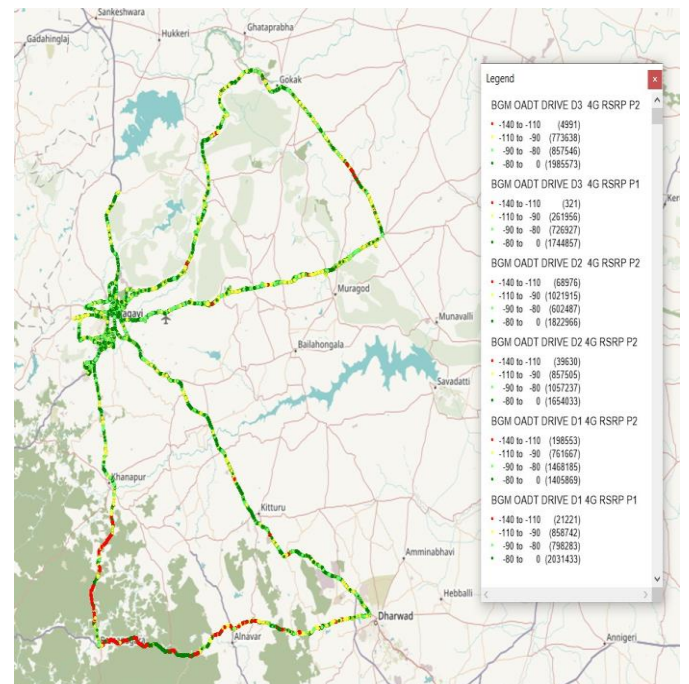
## AIRTEL

Technology	Coverage Rate %
2G	86.73
4G	98.41

### 2G



### 4G



### 2G

Overall RxLevel	# Samples	% PDF
[Max, >=-75]	4275437	40.73
[-75, >=-85)	4828252	46.00
[-85, >=-95)	1292483	12.31
[-95, >=Min)	99646	0.95
<b>Total</b>	<b>10495818</b>	<b>100.00</b>

### 4G/VoLTE

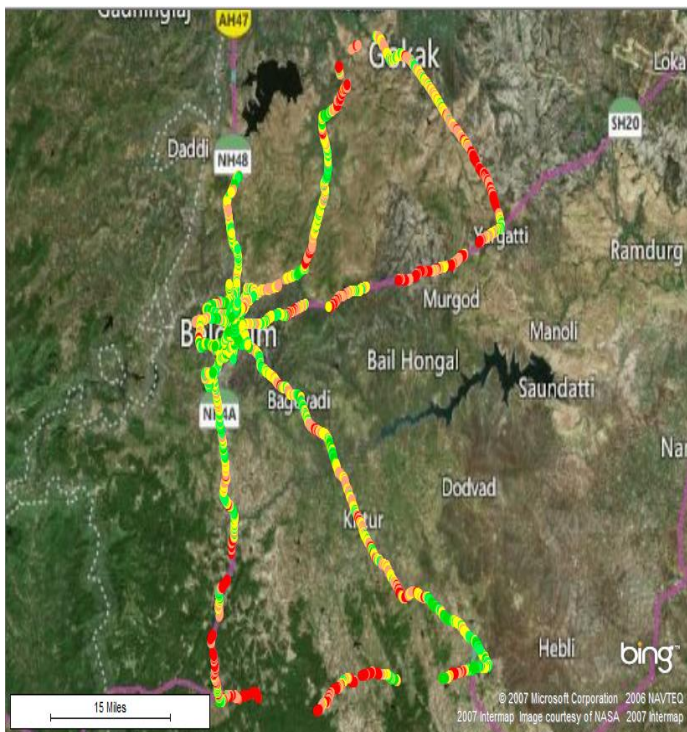
Overall RSRP	# Samples	% PDF
[Max, >=-80]	10644731	50.63
[-80, >=-90)	5510665	26.21
[-90, >=-110)	4535423	21.57
[-110, >=Min)	333692	1.59
<b>Total</b>	<b>21024511</b>	<b>100.00</b>

# I. Coverage Details

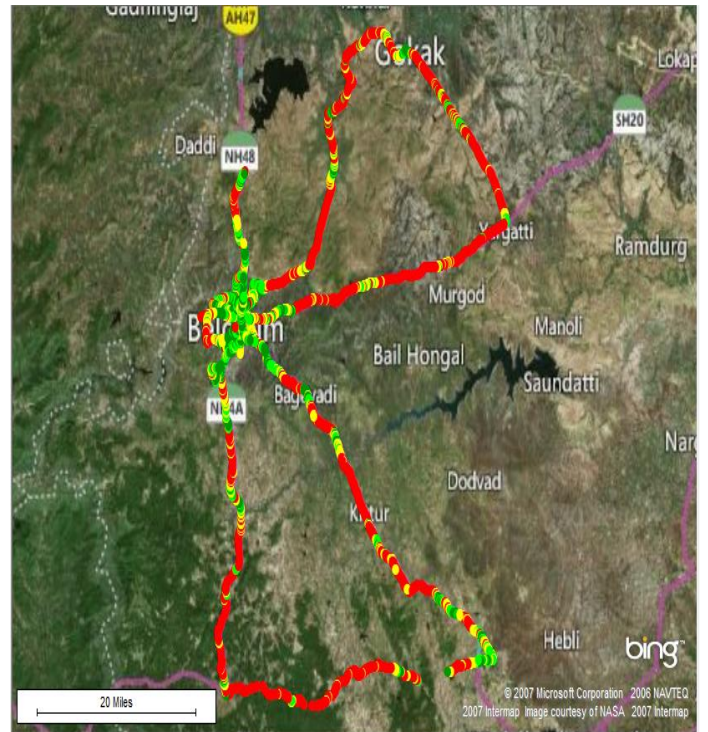
## BSNL

Technology	Coverage Rate %
2G	75.9
3G	67.5

### 2G



### 3G



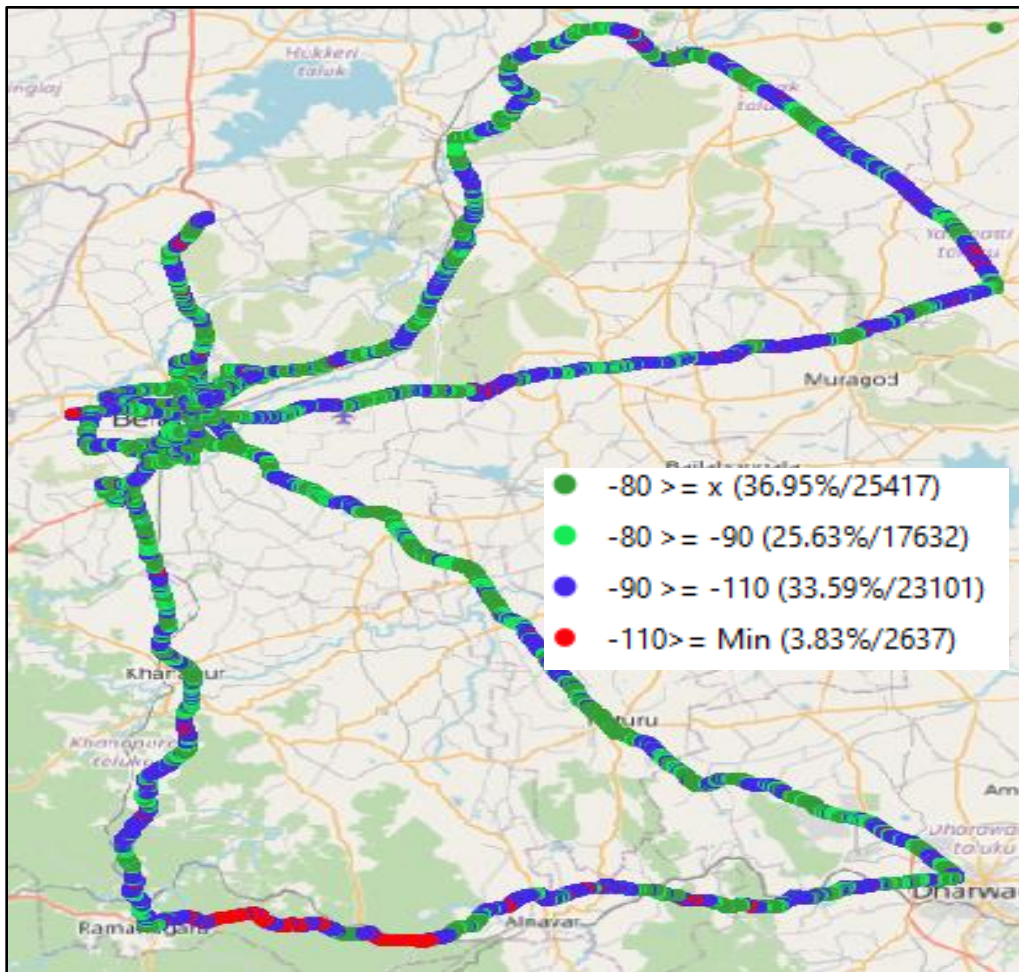
2G		
Overall RxLevel	# Samples	% PDF
[Max, >=-75]	25761	42.9
[-75, >=-85]	19783	33.0
[-85, >=-95]	10599	17.7
[-95, >=Min]	3811	6.4
<b>Total</b>	<b>59954</b>	<b>100</b>

3G		
Overall RSCP	# Samples	% PDF
[Max, >=-70]	19149	25.8
[-70, >=-80]	17553	23.7
[-80, >=-90]	13307	17.9
[-90, >=Min]	24128	32.5
<b>Total</b>	<b>74137</b>	<b>100</b>

# I. Coverage Details

## JIO

Technology	Coverage Rate %
4G	96.17



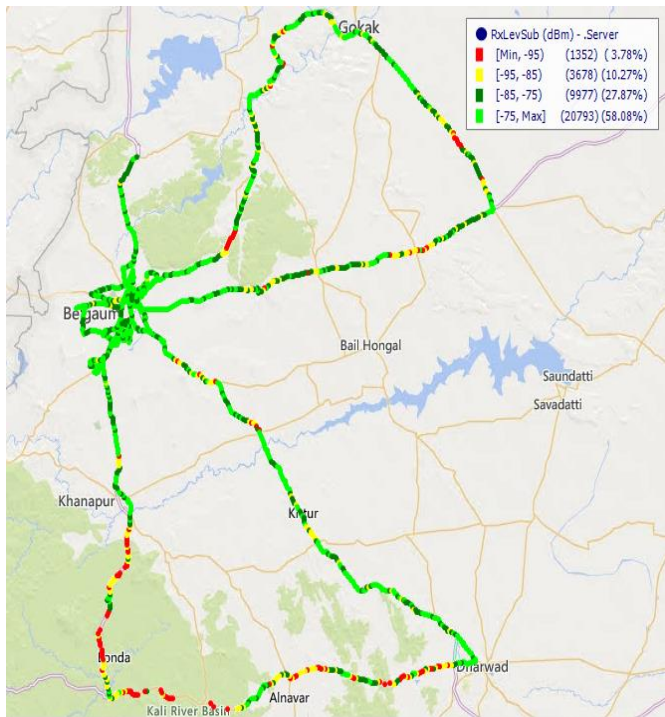
4G		
Overall RSRP	# Samples	% PDF
[Max, >=-80]	25417	36.95
[-80, >=-90)	17632	25.63
[-90, >=-110)	23101	33.59
[-110, >=Min)	2637	3.83
<b>Total</b>	<b>68787</b>	<b>100</b>

# I. Coverage Details

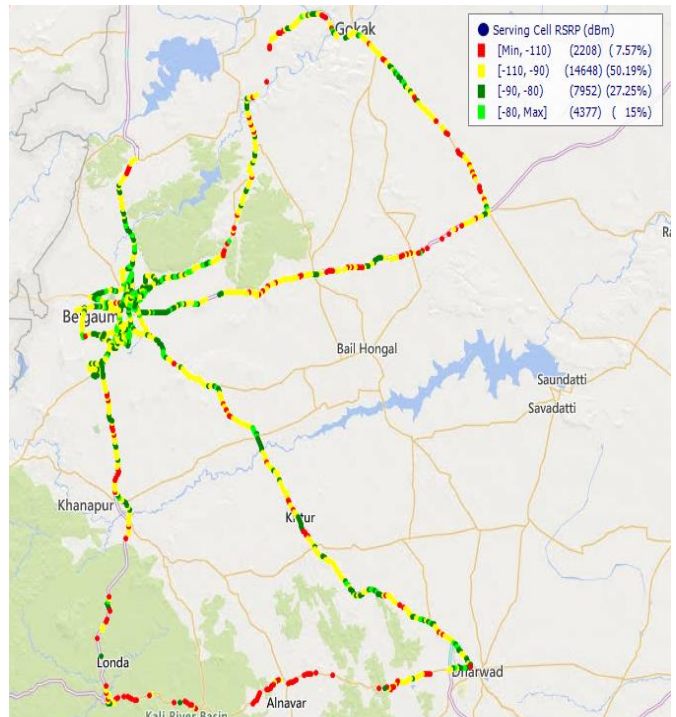
## VIL

Technology	Coverage Rate %
2G	85.95
4G	92.43

### 2G



### 4G



2G		
Overall RxLevel	# Samples	% PDF
[Max, >=-75]	20793	58.08
[-75, >=-85)	9977	27.87
[-85, >=-95)	3678	10.27
[-95, >=Min)	1352	3.78
<b>Total</b>	<b>35800</b>	<b>100.00</b>

4G/VoLTE		
Overall RSRP	# Samples	% PDF
[Max, >=-80]	4377	15.00
[-80, >=-90)	7952	27.25
[-90, >=-110)	14648	50.19
[-110, >=Min)	2208	7.57
<b>Total</b>	<b>29185</b>	<b>100.00</b>



## II. Quality Details

For measuring voice quality, as per the QoS norms, RxQual  $\leq 5$  for GSM TSPs, EcNo  $\geq -14$  dBm for 3G TSP and SINR  $> 0$  in case of 4G is considered to be good, where as quality beyond this benchmark is considered to be bad. The benchmark should usually be  $\geq 95\%$ .

TSP	Rx Quality %
Airtel 2G	<b>95.09</b>
BSNI 2G	<b>92.90</b>
VIL 2G	<b>95.40</b>
BSNL 3G	<b>94.20</b>
Airtel 4G	<b>92.34</b>
Jio 4G	<b>90.87</b>
VIL 4G	<b>91.95</b>

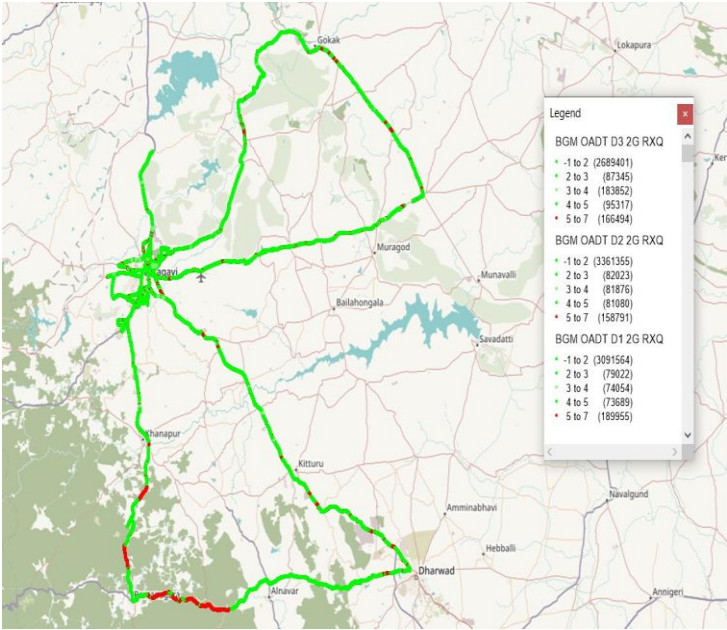


# II. Quality Details

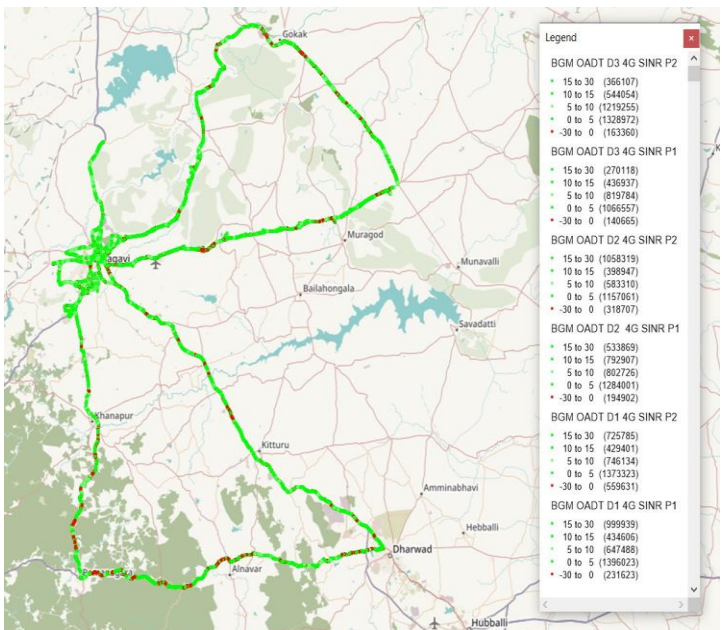
## Airtel

Technology	Rx Quality %
2G	95.09
4G	92.34

### 2G



### 4G



Overall Rx Quality	# Samples	% PDF
(Min, <=2)	9142320	87.10
(2, <=3)	248390	2.37
(3, <=4)	339782	3.24
(4, <=5)	250086	2.38
(5, <=Max)	515240	4.91
<b>Total</b>	<b>10495818</b>	<b>100.00</b>

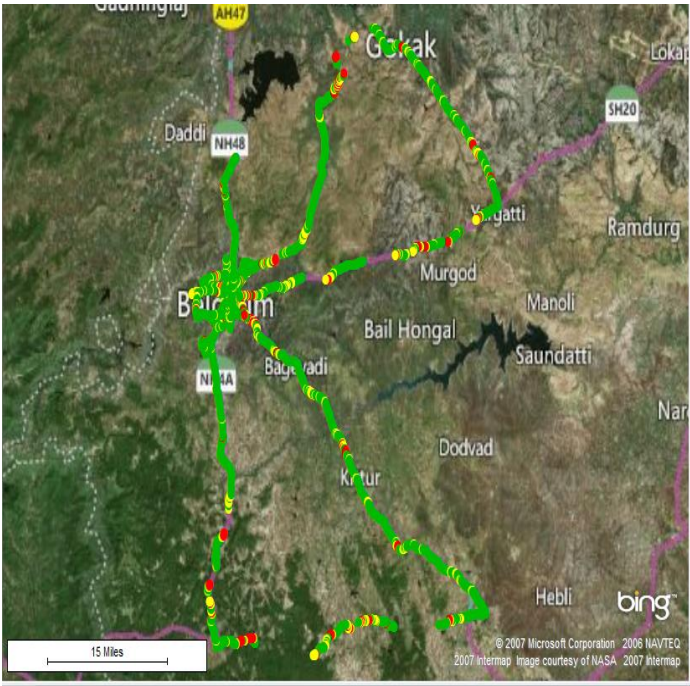
Overall SINR	# Samples	% PDF
(Min, <=0)	1608888	7.65
(0, <=5)	7605937	36.18
(5, <=10)	4818697	22.92
(10, <=15)	3036852	14.44
(15, <=Max)	3954137	18.81
<b>Total</b>	<b>21024511</b>	<b>100.00</b>

# II. Quality Details

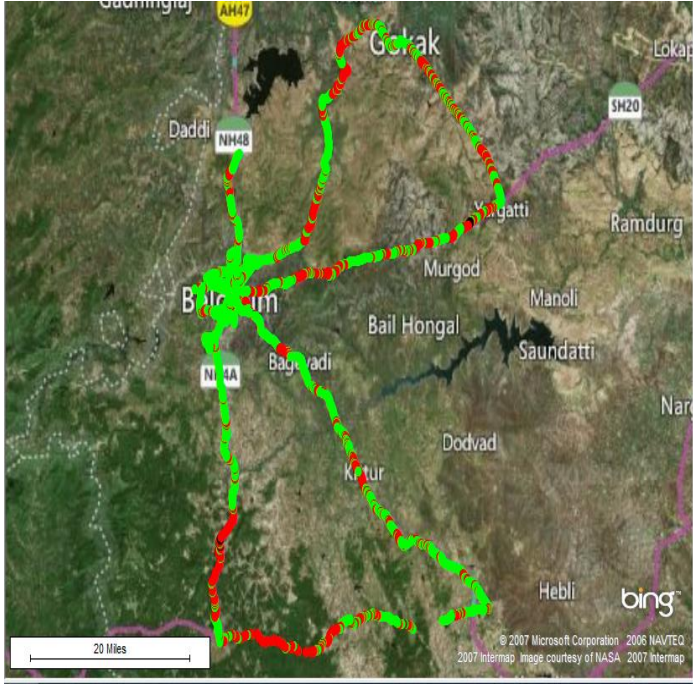
## BSNL

Technology	Rx Quality %
2G	92.9
3G	94.2

### 2G



### 3G



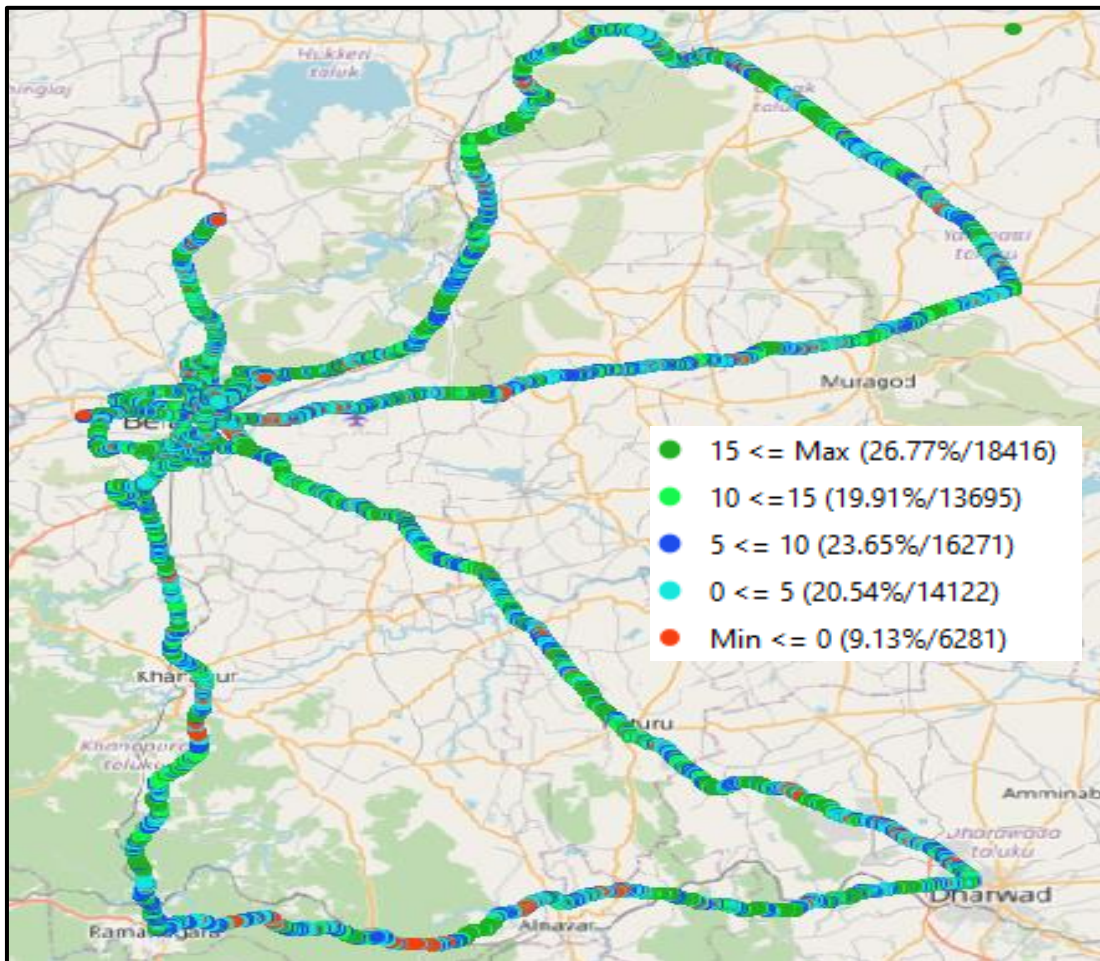
Overall Rx Quality	# Samples	% PDF
(Min, <=2)	50342	84
(2, <=3)	2277	3.8
(3, <=4)	1917	3.2
(4, <=5)	1138	1.9
(5, <=Max)	4255	7.1
<b>Total</b>	<b>59929</b>	<b>100</b>

Overall EcNo	# Samples	% PDF
(Max, <=-6)	11826	19.1
(-6, <=-9)	10154	16.4
(-9, <=-11)	23838	38.5
(-11, <=-14)	12507	20.2
(-14, <= Min)	3591	5.8
<b>Total</b>	<b>61916</b>	<b>100</b>

## II. Quality Details

### JIO

Technology	Rx Quality (%)
4G	90.87



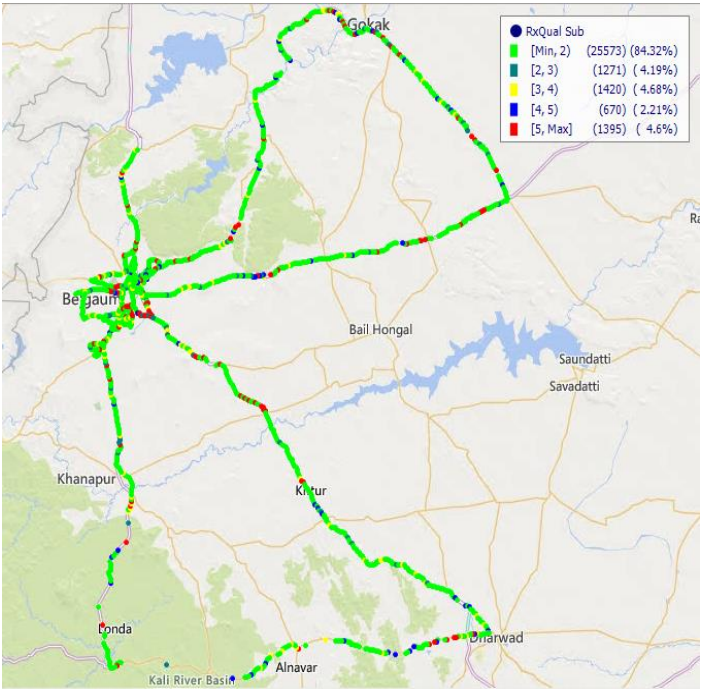
Overall SINR	# Samples	% PDF
(Min, <=0)	6281	9.13
(0, <=5)	14122	20.54
(5, <=10)	16271	23.65
(10, <=15)	13695	19.91
(15, <=Max)	18416	26.77
<b>Total</b>	<b>68785</b>	<b>100</b>

# II. Quality Details

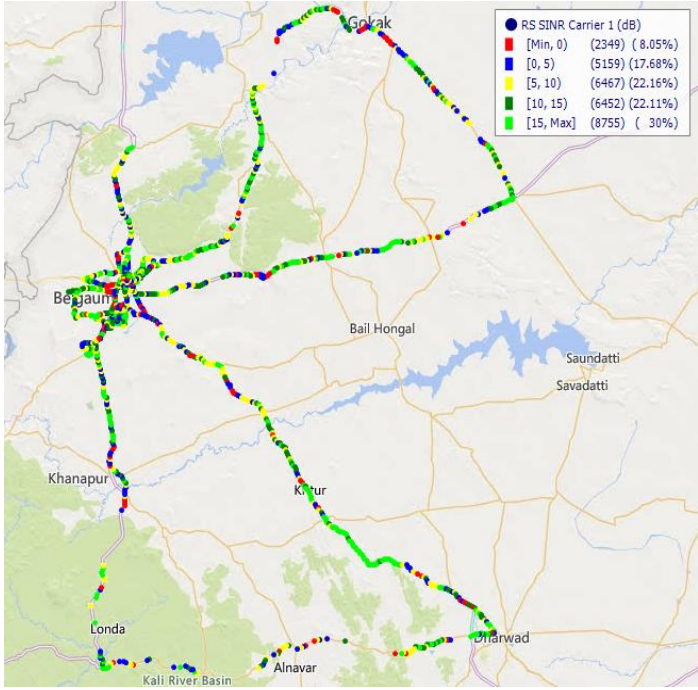
## VIL

Technology	Rx Quality %
2G	95.40
4G	91.95

### 2G



### 4G

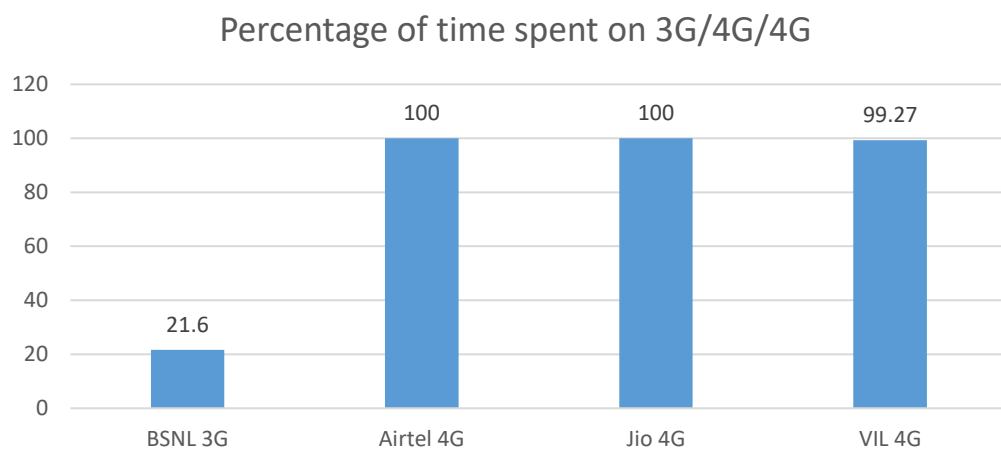


Overall Rx Quality	# Samples	% PDF
(Min, <=2)	25573	84.32
(2, <=3)	1271	4.19
(3, <=4)	1420	4.68
(4, <=5)	670	2.21
(5, <=Max)	1395	4.60
<b>Total</b>	<b>30329</b>	<b>100.00</b>

Overall SINR	# Samples	% PDF
(Min, <=0)	2662	9.48
(0, <=5)	6027	21.47
(5, <=10)	7951	28.32
(10, <=15)	6153	21.92
(15, <=Max)	5279	18.81
<b>Total</b>	<b>28072</b>	<b>100</b>

### III. Technology Details

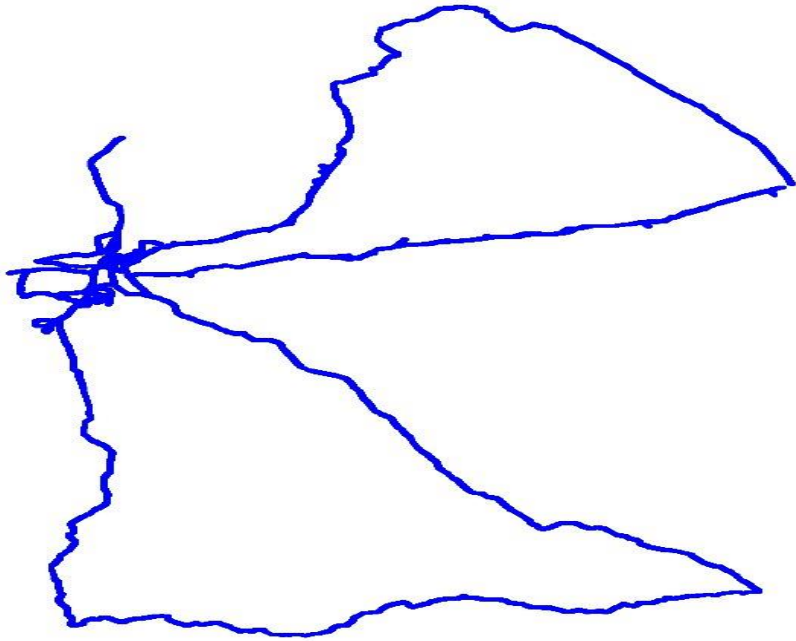
TSP	Time Spent on 3G/4G %
BSNL 3G	21.6
Airtel 4G	100
Jio 4G	100
VIL 4G	99.27



### III. Technology Details

#### Airtel

Technology	Time Spent %
4G	100



### III. Technology Details

#### BSNL

Technology	Time Spent %
3G	21.6

Technology Plot of complete SSA (3G)

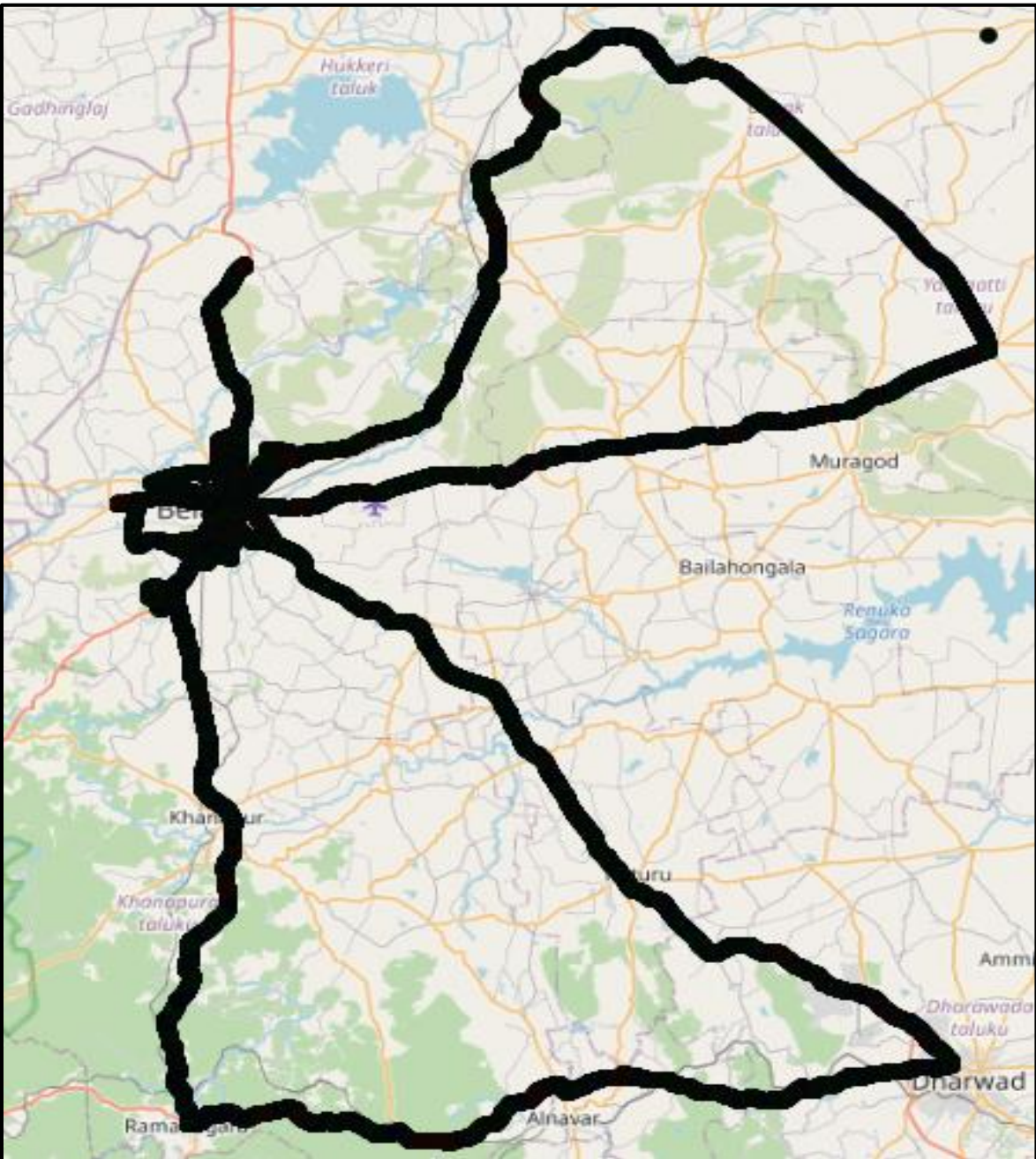
PLOT NOT AVAILABLE



### III. Technology Details

#### JIO

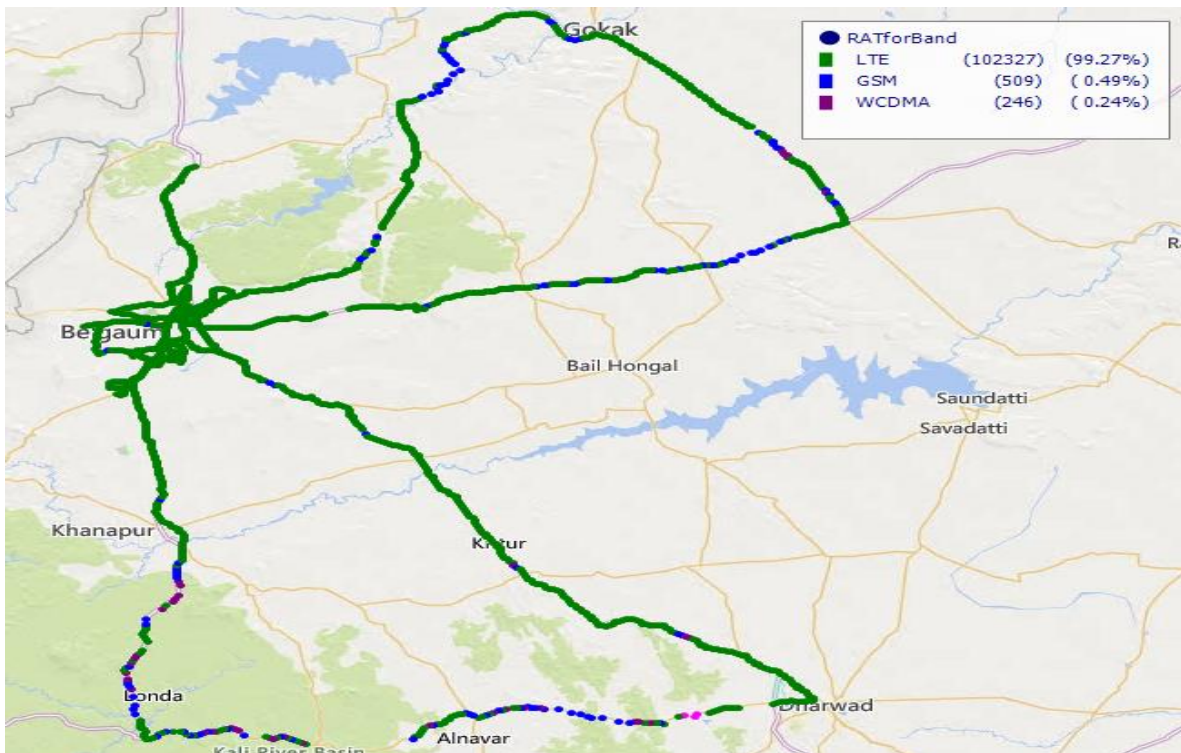
Technology	Time Spent %
4G	100



### III. Technology Details

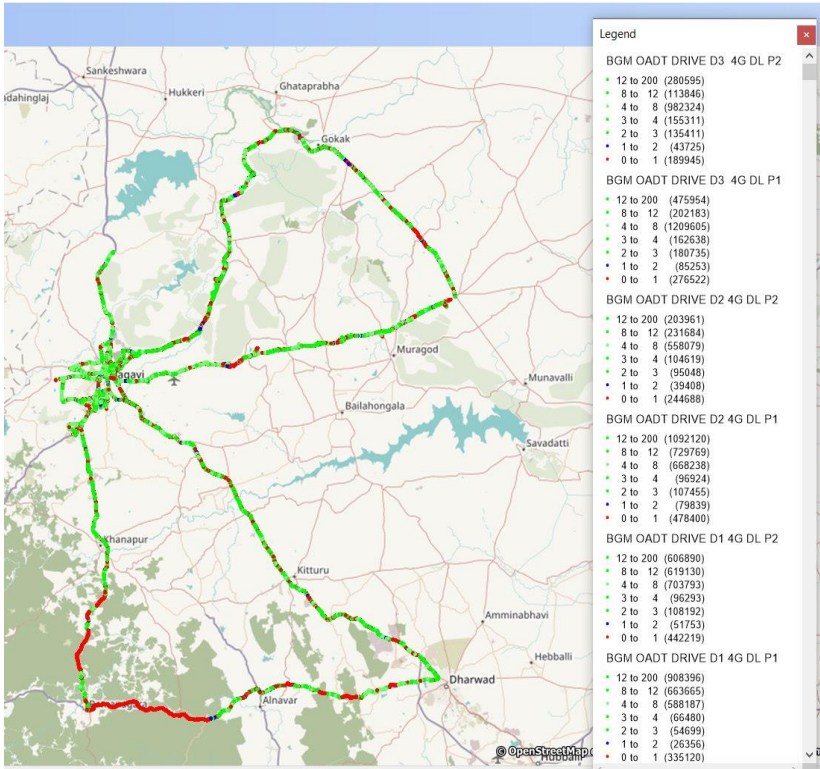
#### VIL

Technology	Time Spent
4G	99.27

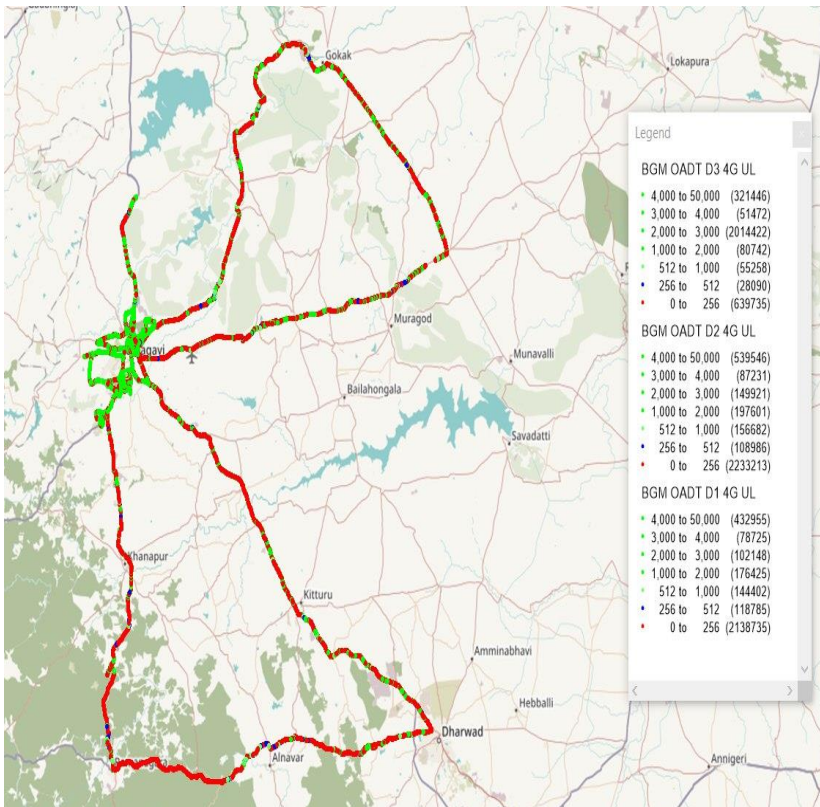


# IV. Dynamic Data Test (Data Test on Move) - 4G DL/UL Details

## Airtel



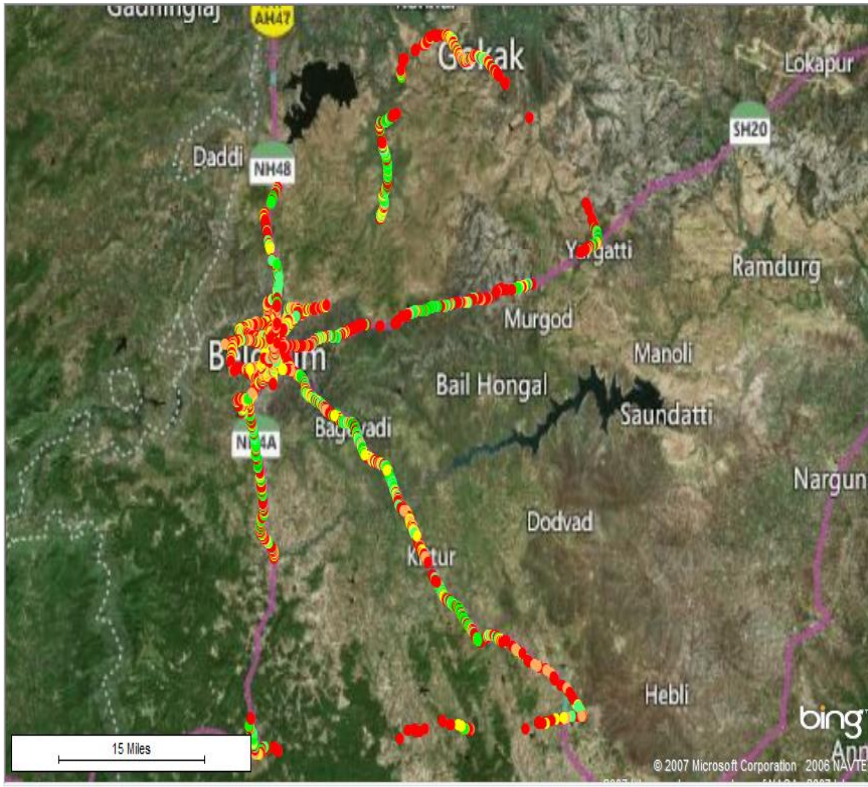
DL throughput	No. of Samples	%
0 to 1 Mbps	1966894	13.57
1 to 2 Mbps	326334	2.25
2 to 3 Mbps	681540	4.70
3 to 4 Mbps	682265	4.71
4 to 8 Mbps	4710226	32.49
8 to 12 Mbps	2560277	17.66
>12 Mbps	3567916	24.61
<b>Total</b>	<b>14495452</b>	<b>100</b>



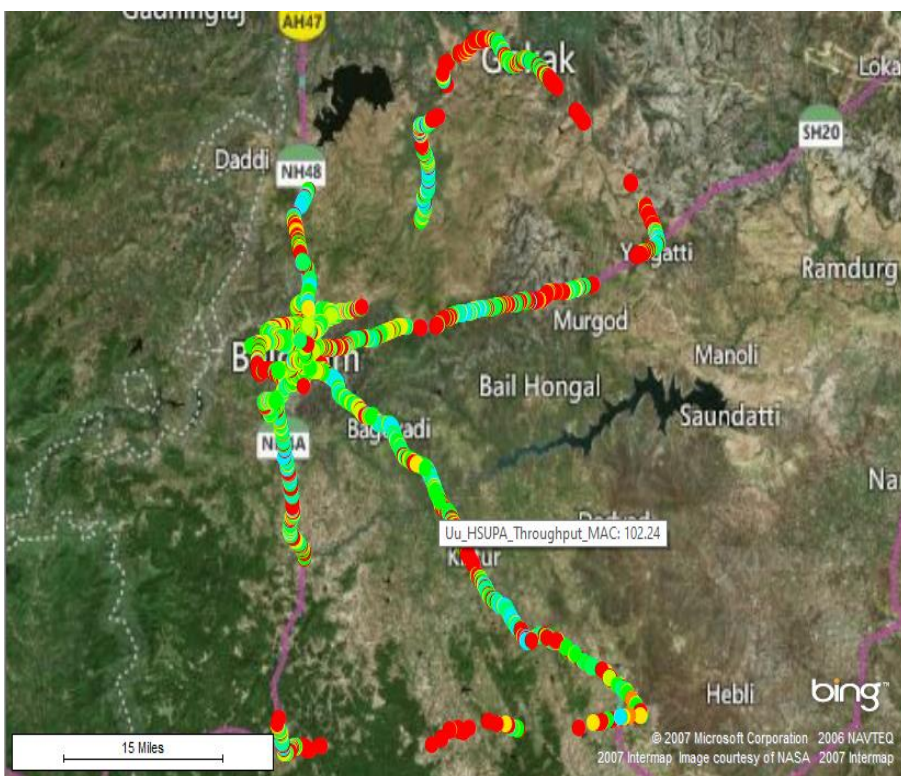
UL throughput	No. of samples	%
0 to 256 Kbps	5011683	50.85
250 to 512 Kbps	255861	2.60
512 Kbps to 1 Mbps	356342	3.62
1 to 2 Mbps	454768	4.61
2 to 3 Mbps	2266491	22.99
3 to 4 Mbps	217428	2.21
>4 Mbps	1293947	13.13
<b>Total</b>	<b>9856520</b>	<b>100.00</b>

# IV. Dynamic Data Test(Data Test on Move)- 3G/4G DL/UL Details

## BSNL



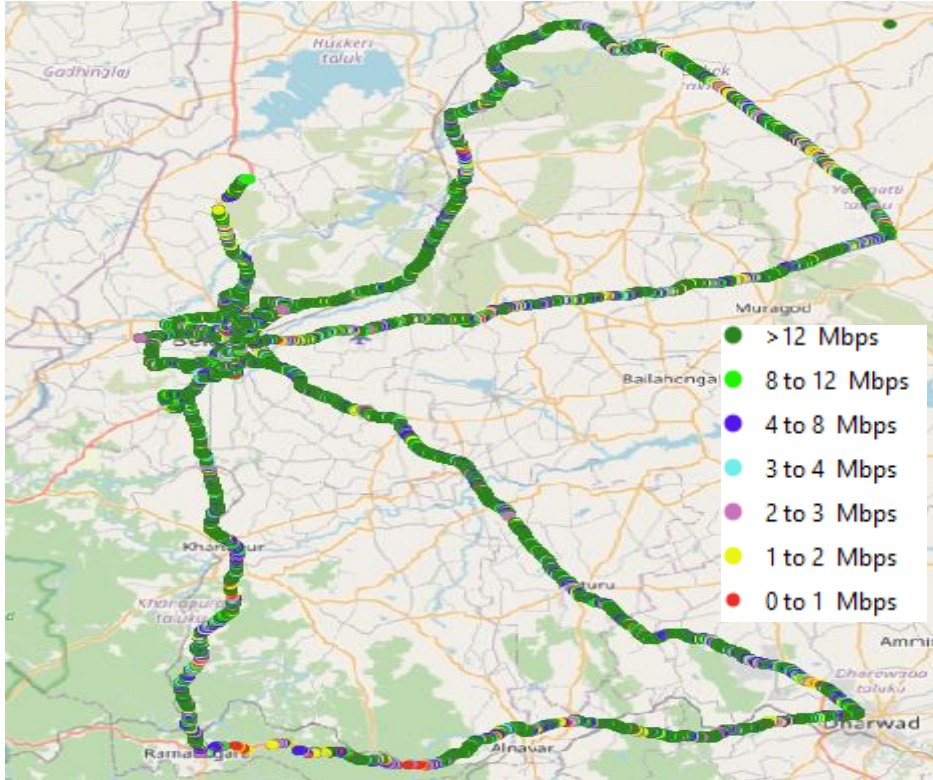
DL throughput	No. of Samples	%
0 to 1 Mbps	22774	49
1 to 2 Mbps	11201	24.1
2 to 3 Mbps	5112	11
3 to 4 Mbps	1859	4
4 to 8 Mbps	4183	9
8 to 12 Mbps	1068	2.3
>12 Mbps	278	0.6
Total	46478	100



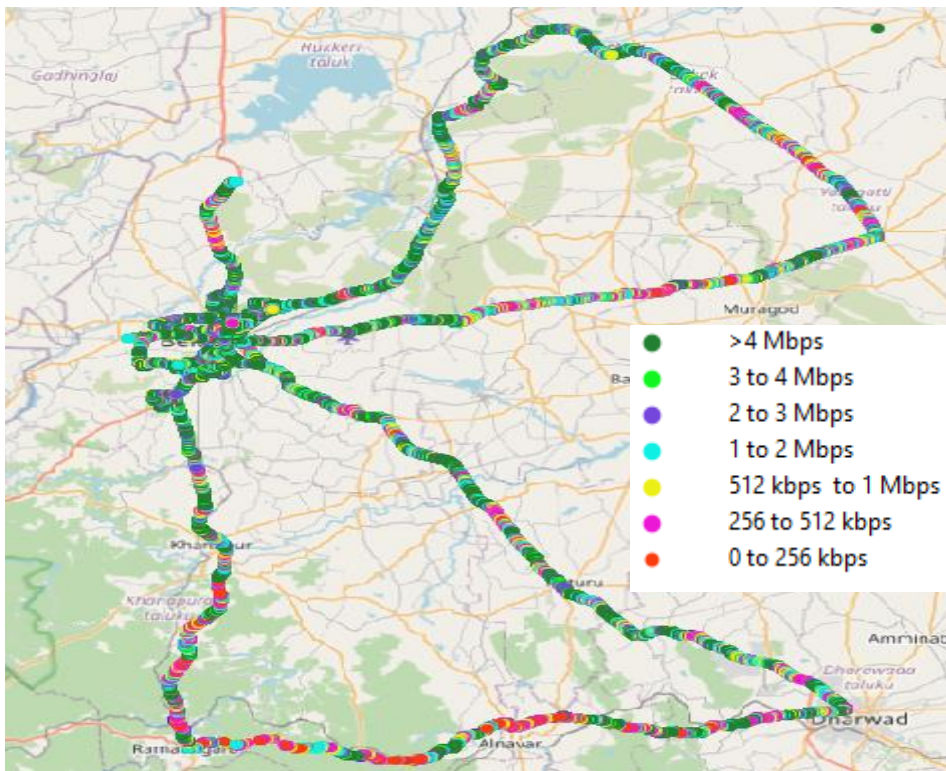
UL throughput	No. of Samples	%
0 to 1 Mbps	48556	89.12
1 to 2 Mbps	3650	6.69
2 to 3 Mbps	1307	2.3
3 to 4 Mbps	533	0.97
4 to 8 Mbps	354	0.64
8 to 12 Mbps	54	0.099
>12 Mbps	16	0.029
Total	54478	100

# IV. Dynamic Data Test(Data Test on Move)- 4G DL/UL Details

## JIO



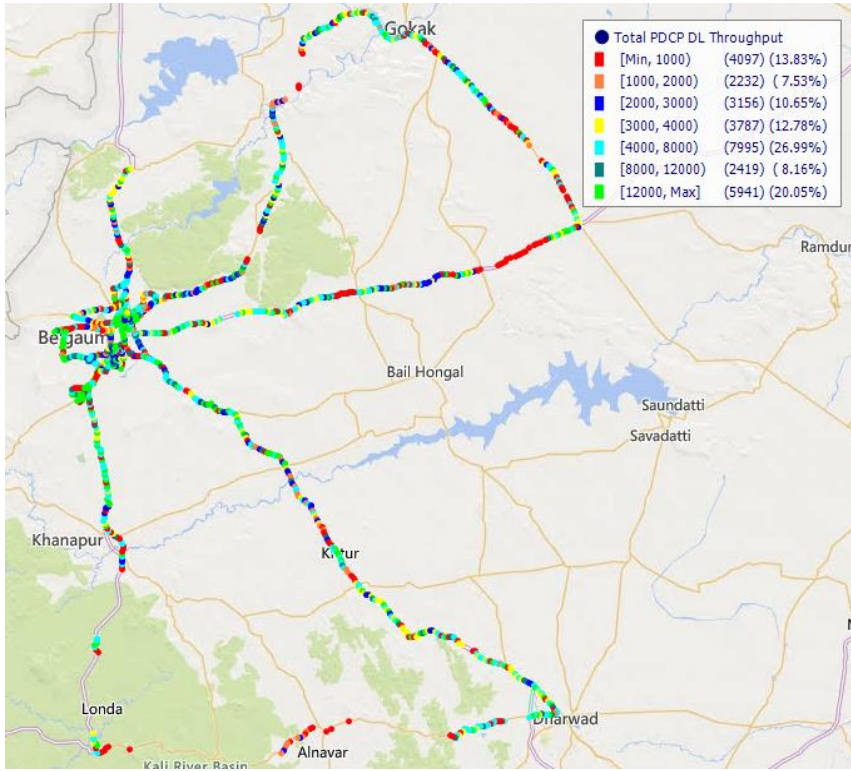
DL throughput	No. of Samples	%
0 to 1 Mbps	2520	6.06
1 to 2 Mbps	2247	5.41
2 to 3 Mbps	2218	5.34
3 to 4 Mbps	2112	5.08
4 to 8 Mbps	6848	16.48
8 to 12 Mbps	4809	11.58
>12 Mbps	20798	50.05
Total	41552	100



UL throughput	No. of samples	%
0 to 256 kbps Mbps	3503	8.16
256 to 512 kbps	3684	8.58
512 Kbps to 1 Mbps	4960	11.55
1 to 2 Mbps	7395	17.22
2 to 3 Mbps	5367	12.5
3 to 4 Mbps	3921	9.13
>4Mbps	14113	32.86
Total	42943	100

# IV. Dynamic Data Test (Data Test on Move)- 4G DL/UL Details

## VIL



DL throughput	No. of Samples	%
0 to 1 Mbps	4097	13.83
1 to 2 Mbps	2232	7.53
2 to 3 Mbps	3156	10.65
3 to 4 Mbps	3787	12.78
4 to 8 Mbps	7995	26.99
8 to 12 Mbps	2419	8.16
>12 Mbps	5941	20.05
Total	29627	100.00

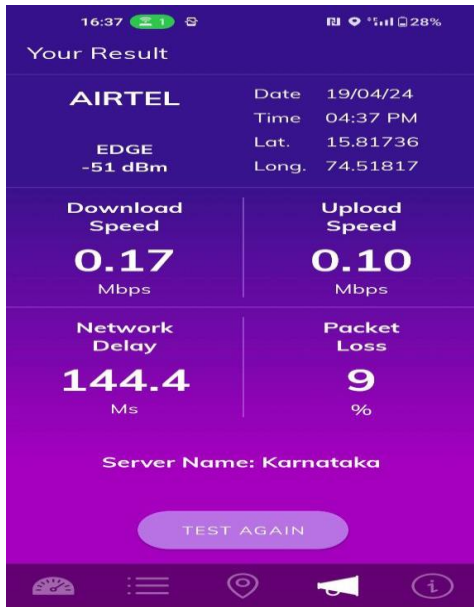
PLOT NOT AVAILABLE

UL throughput	No. of samples	%
0 to 256 Kbps		
250 to 512 Kbps		
512 Kbps to 1 Mbps		
1 to 2 Mbps		
2 to 3 Mbps		
3 to 4 Mbps		
>4Mbps		
Total		

## V. TRAI My Speed App Test Details-2G

Technology-2G	KLE Centenary Charitable Hospital	Collector Office	Railway Station	Belagavi Fort	RTO Office	ICMR
Download Speed (Mbps)	0.17	0.1	0.17	0.12	0.14	0.1
Upload Speed (Mbps)	0.1	0.03	0.11	0.01	0.06	0.04
Latency(ms)	144.4	3634.8	344.7	1130.3	1395	153.9

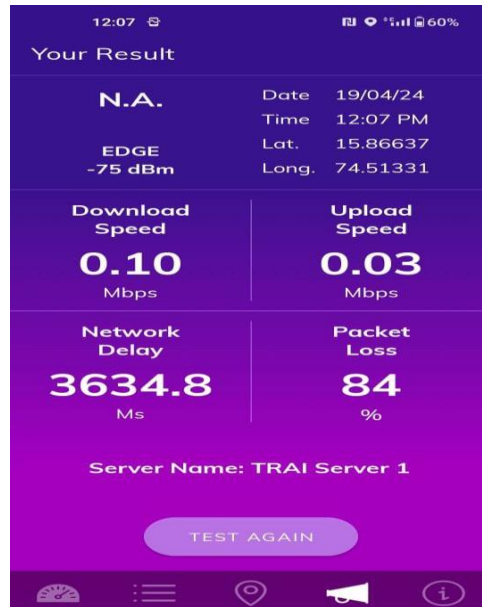
### KLEC Charitable Hospital



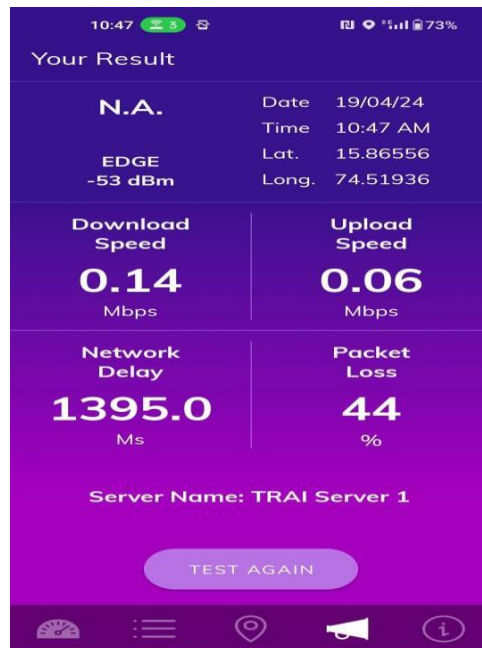
### Belagavi Fort



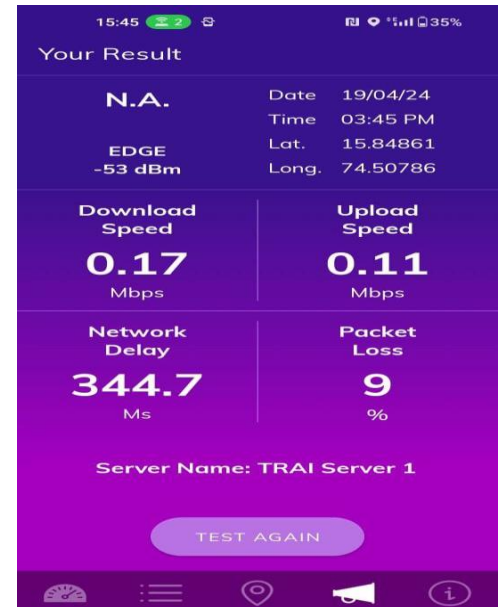
### Collector Office



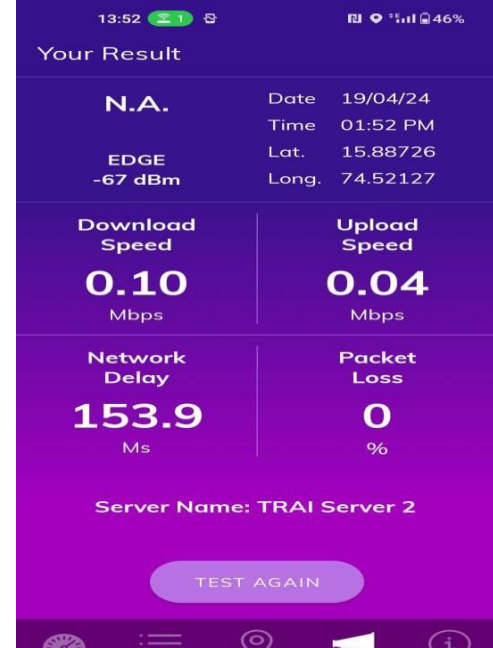
### RTO Office



### Railway Station

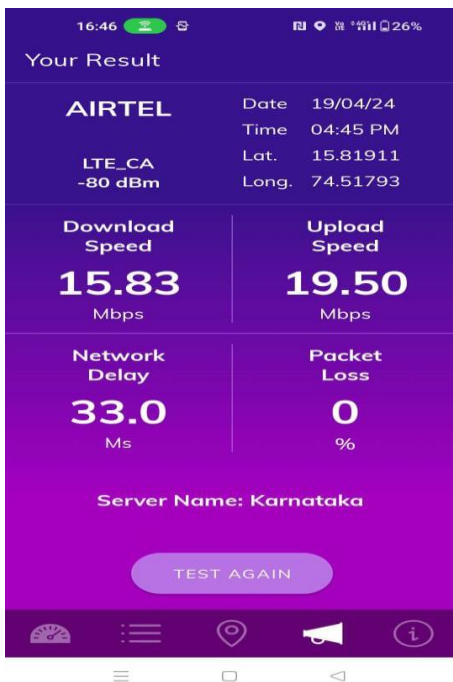


### ICMR

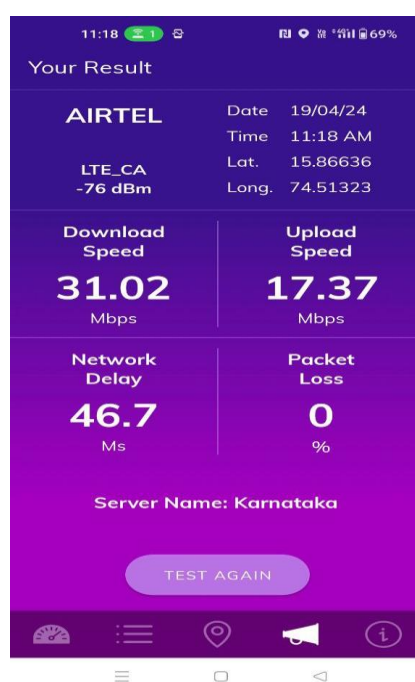


Techology-4G	KLE Centenary Charitable Hospital	Collector Office	Railway Station	Belagavi Fort	RTO Office	ICMR
Download Speed (Mbps)	15.83	31.02	30.26	14.89	22.12	34.93
Upload Speed (Mbps)	19.5	17.37	8.08	16.67	20.14	2.53
Latency(ms)	33	46.7	33.9	33.3	30.3	58.6

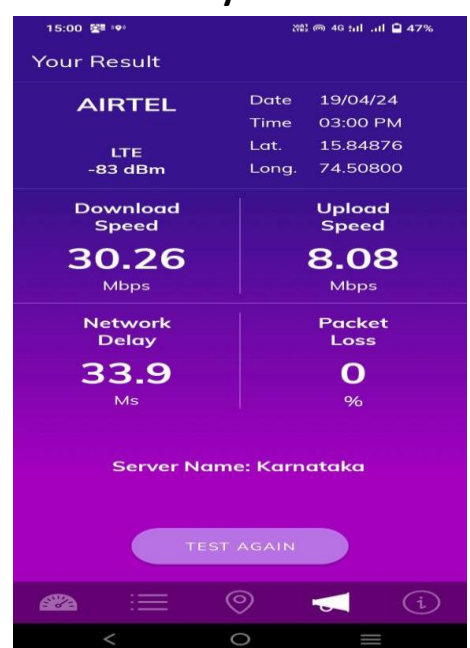
### KLEC Charitable Hospital



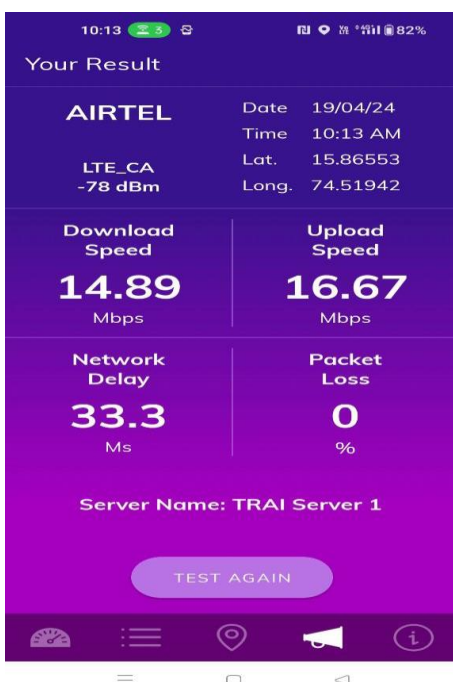
### Collector Office



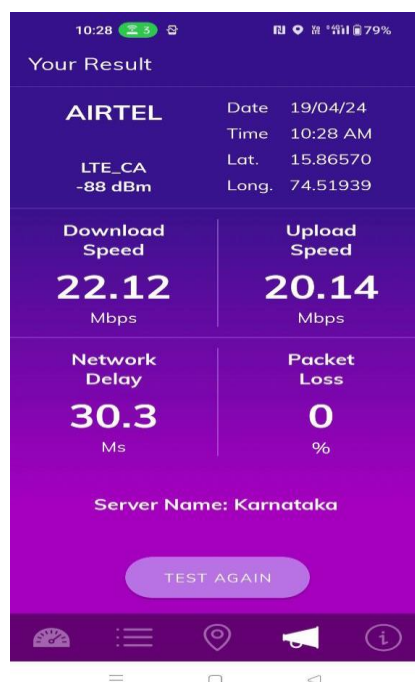
### Railway Station



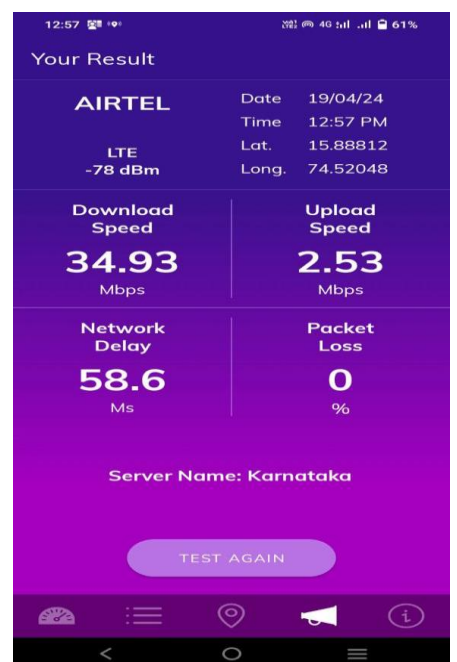
### Belagavi Fort



### RTO Office



### ICMR

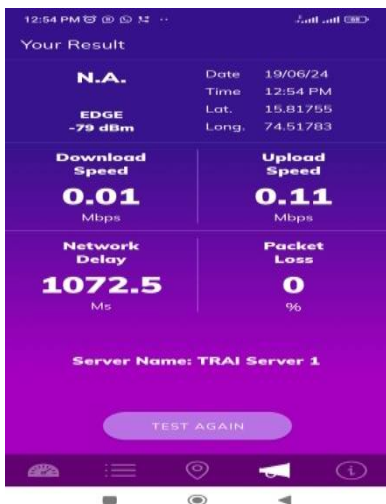




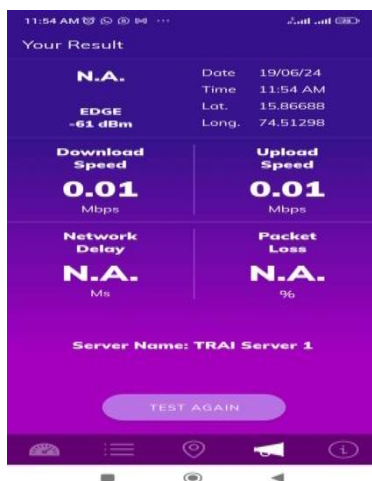
# V. TRAI MySpeed App Test Details-2G

Techology-2G	KLE Centenary Charitable Hospital	Collector Office	Railway Station	Belagavi Fort	RTO Office	ICMR
Download Speed (Mbps)	0.01	0.01	0.06	0.03	0.06	0.02
Upload Speed (Mbps)	0.11	0.01	0.08	0.03	0.01	0.09
Latency(ms)	1072.5	NA	189.4	1690.7	2172.7	223.7

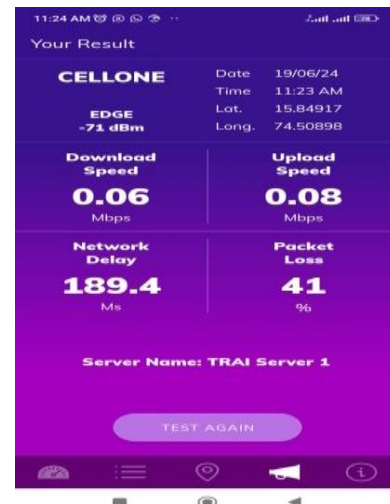
**KLEC Charitable Hospital**



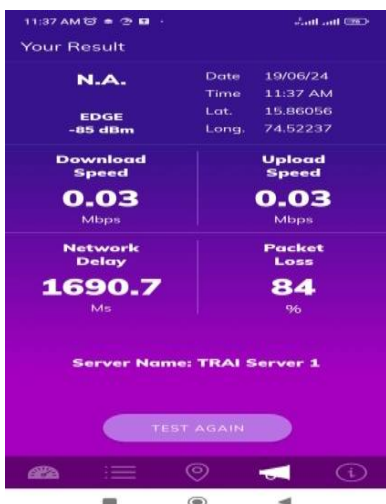
**Collector Office**



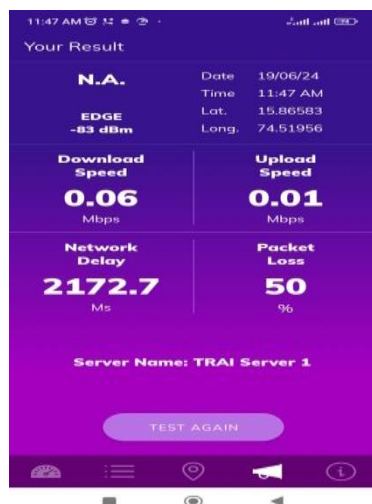
**Railway Station**



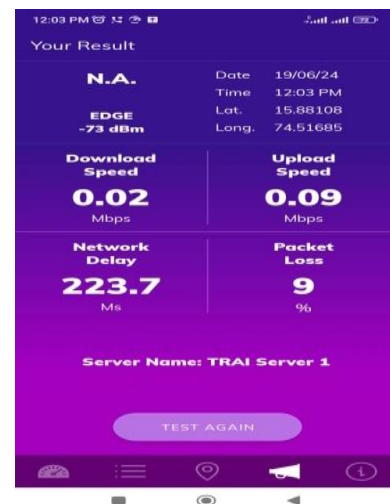
**Belagavi Fort**



**RTO Office**



**ICMR**



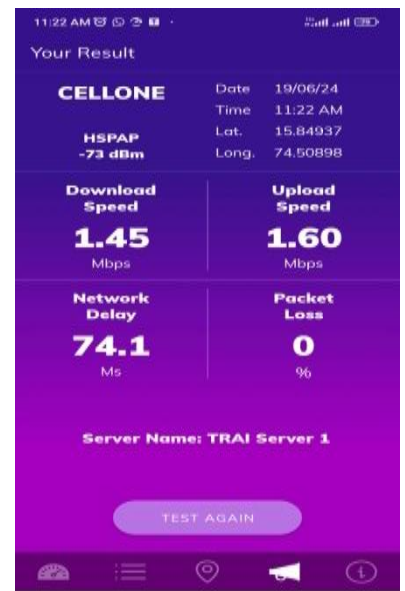
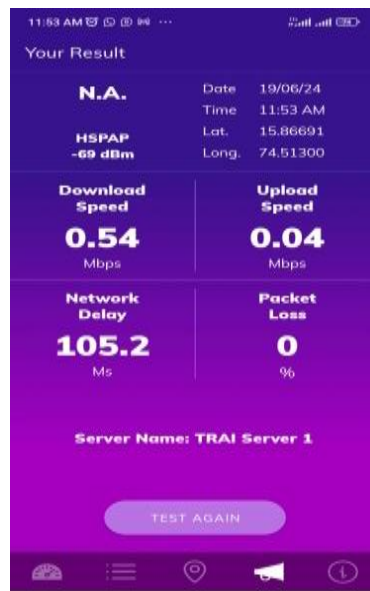
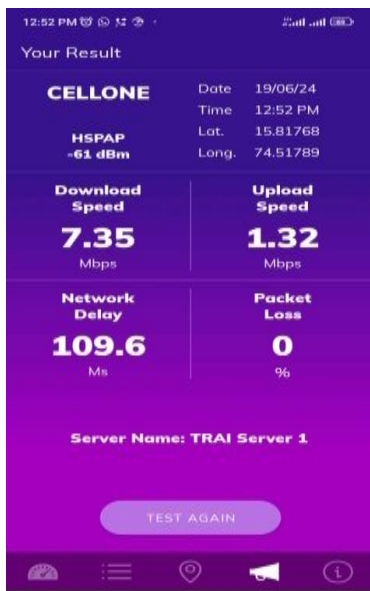
**V. TRAI MySpeed App Test Details-3G/4G**

Technology-4G	KLE Centenary Charitable Hospital	Collector Office	Railway Station	Belagavi Fort	RTO Office	ICMR
Download Speed (Mbps)	7.35	0.54	1.45	0.86	0.99	0.59
Upload Speed (Mbps)	1.32	0.04	1.60	1.07	1.75	0.54
Latency(ms)	109.6	105.2	74.1	106.4	109.4	118.1

**KLEC Charitable Hospital**

**Collector Office**

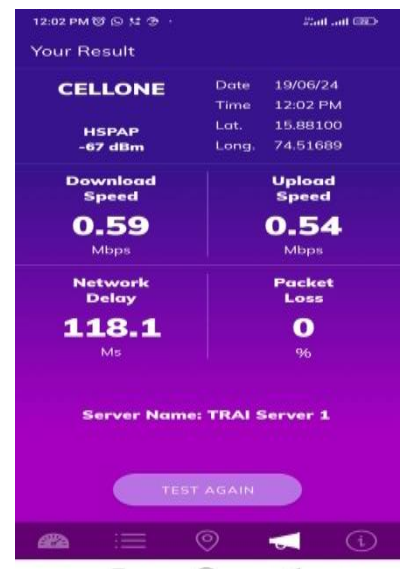
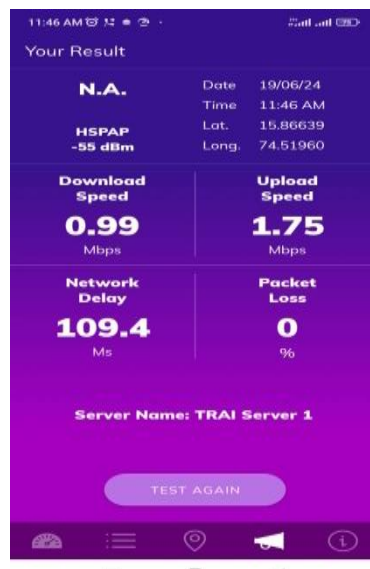
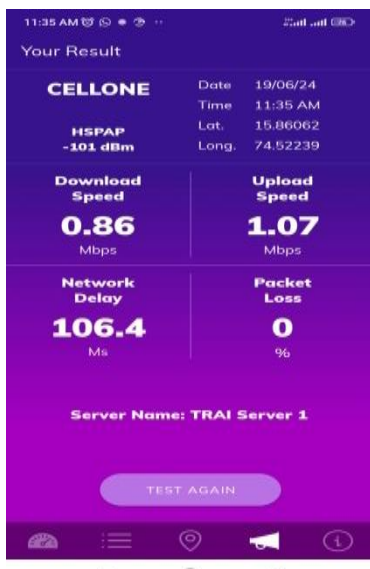
**Railway Station**



**Belagavi Fort**

**RTO Office**

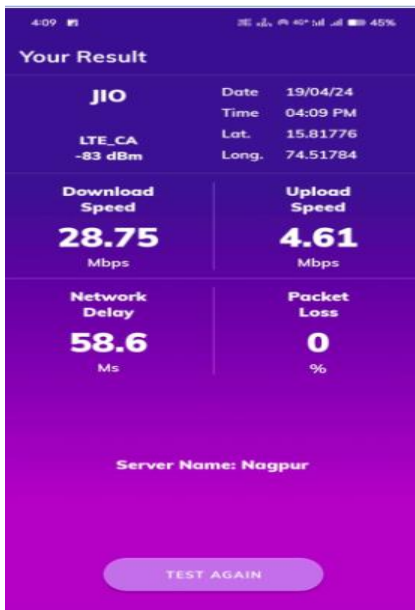
**ICMR**



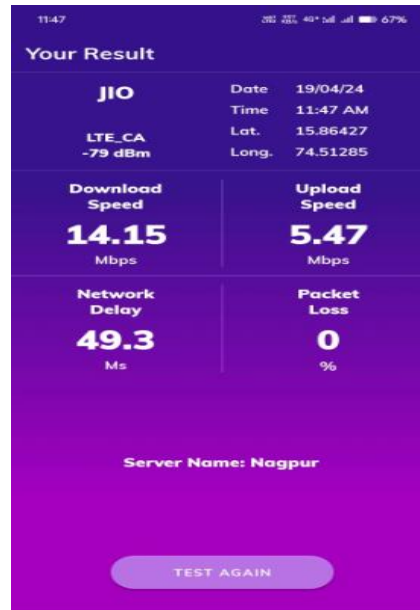
# V. TRAI MySpeed App Test Details-4G

Technology-4G	KLE Centenary Charitable Hospital	Collector Office	Railway Station	Belagavi Fort	RTO Office	ICMR
Download Speed (Mbps)	28.75	14.15	32.30	27.18	22.91	13.85
Upload Speed (Mbps)	4.61	5.47	12.63	4.86	6.49	8.41
Latency(ms)	58.6	49.3	42.3	47.6	41.3	44.3

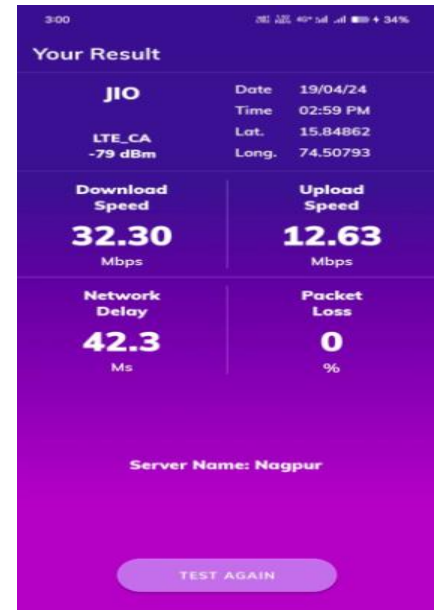
**KLEC Charitable Hospital**



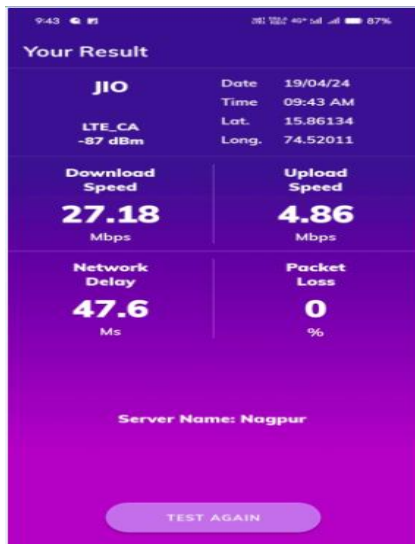
**Collector Office**



**Railway Station**



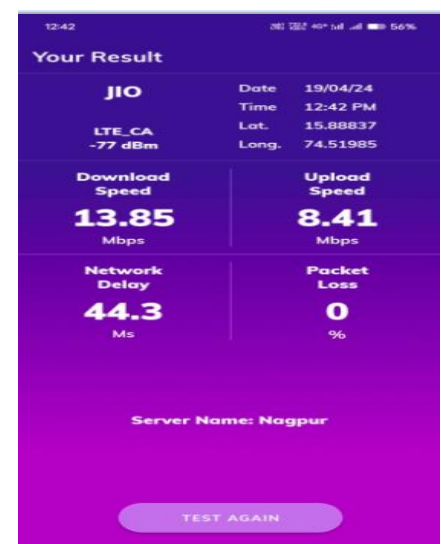
**Belagavi Fort**



**RTO Office**



**ICMR**

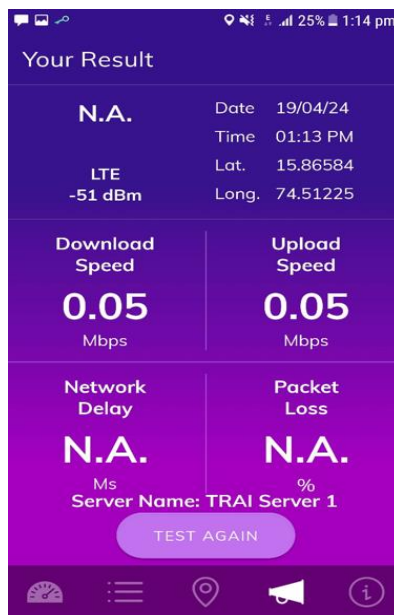


Techology-2G	KLE Centenary Charitable Hospital	Collector Office	Railway Station	Belagavi Fort	RTO Office	ICMR
Download Speed (Mbps)	0.04	0.05	0.14	0.13	0.11	0.05
Upload Speed (Mbps)	0.01	0.05	0.09	0.07	0.07	0.05
Latency(ms)	135.6	NA	177.5	132	208.4	128.1

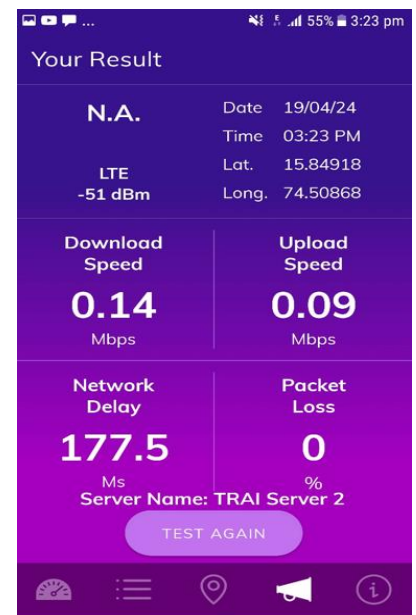
### KLEC Charitable Hospital



### Collector Office



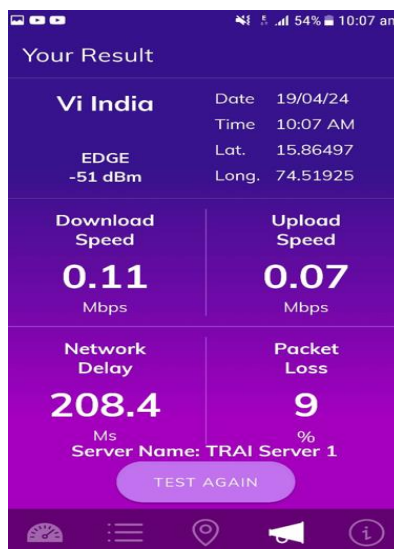
### Railway Station



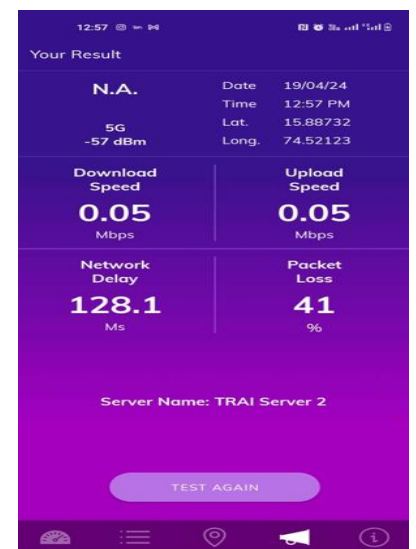
### Belagavi Fort



### RTO Office

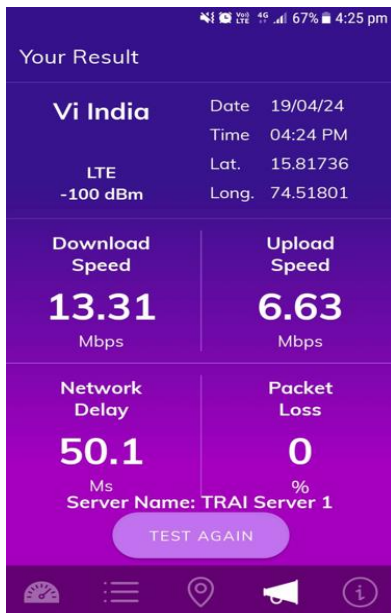


### ICMR

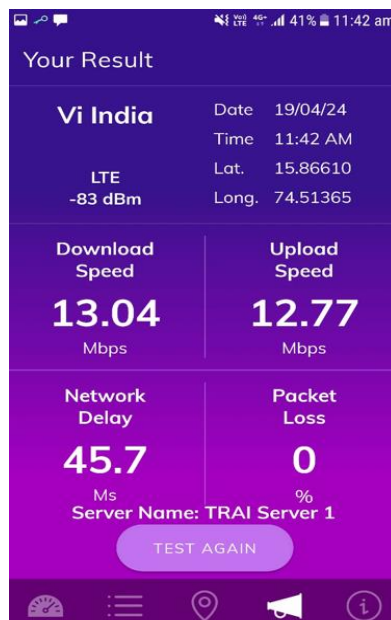


Techology-4G	KLE Centenary Charitable Hospital	Collector Office	Railway Station	Belagavi Fort	RTO Office	ICMR
Download Speed (Mbps)	13.31	13.04	9.73	14.33	20.68	15.45
Upload Speed (Mbps)	6.63	12.77	1.84	8.35	14.53	12.27
Latency(ms)	50.1	45.7	32.7	NA	30.1	31.3

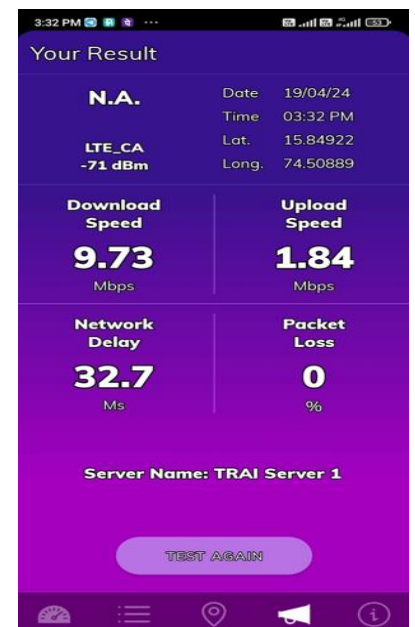
### KLEC Charitable Hospital



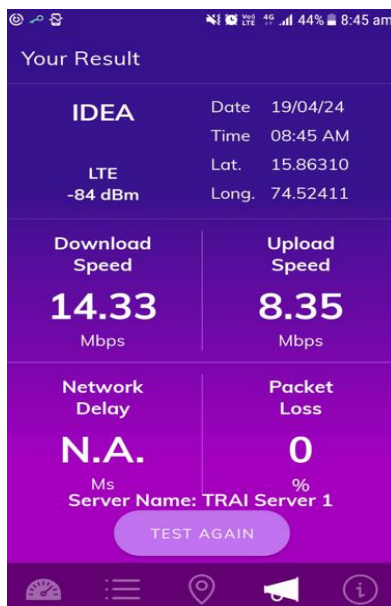
### Collector Office



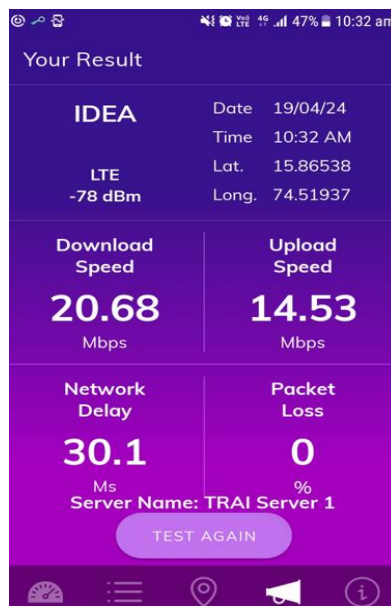
### Railway Station



### Belagavi Fort



### RTO Office



### ICMR

